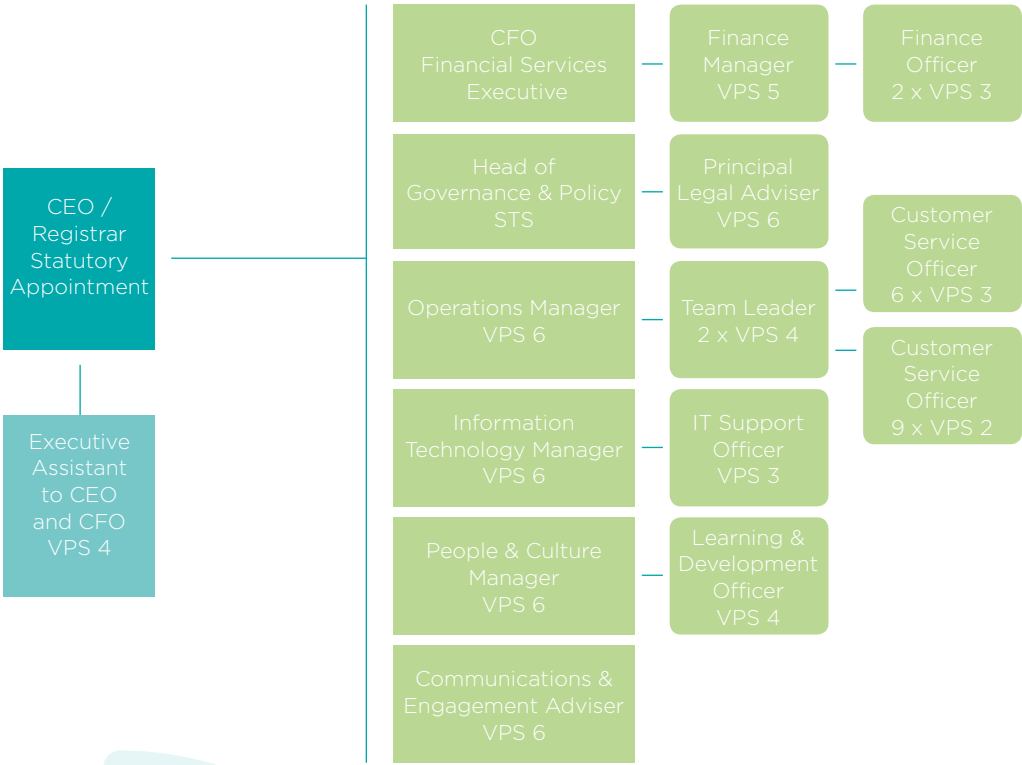


Resources - People

The Authority forecasts 31 FTE in 2019-20. The below table is a graphic representation of the projected structure based on this forecast.

Portable Long Service Benefits Authority - Staff Head Count by VPS Levels



During the 2019-20 operating year, the Authority's focus will be on:

- building a work culture that is collegiate, effective and values-based
- ensuring that staff facilities are safe and fit for purpose
- designing health and safety policies and associated processes and
- implementation of fit-for-purpose training plan to develop support and grow staff competencies.