

MARAM Responsibilities decision guide for:

Leaders of services engaging potential victim survivor or/and perpetrators in service delivery

Follow this decision guide for each member of your team

STEP 1

DESCRIPTION

First determine which of the below best describes your team member and proceed to Steps 2 & 3

STEP 2

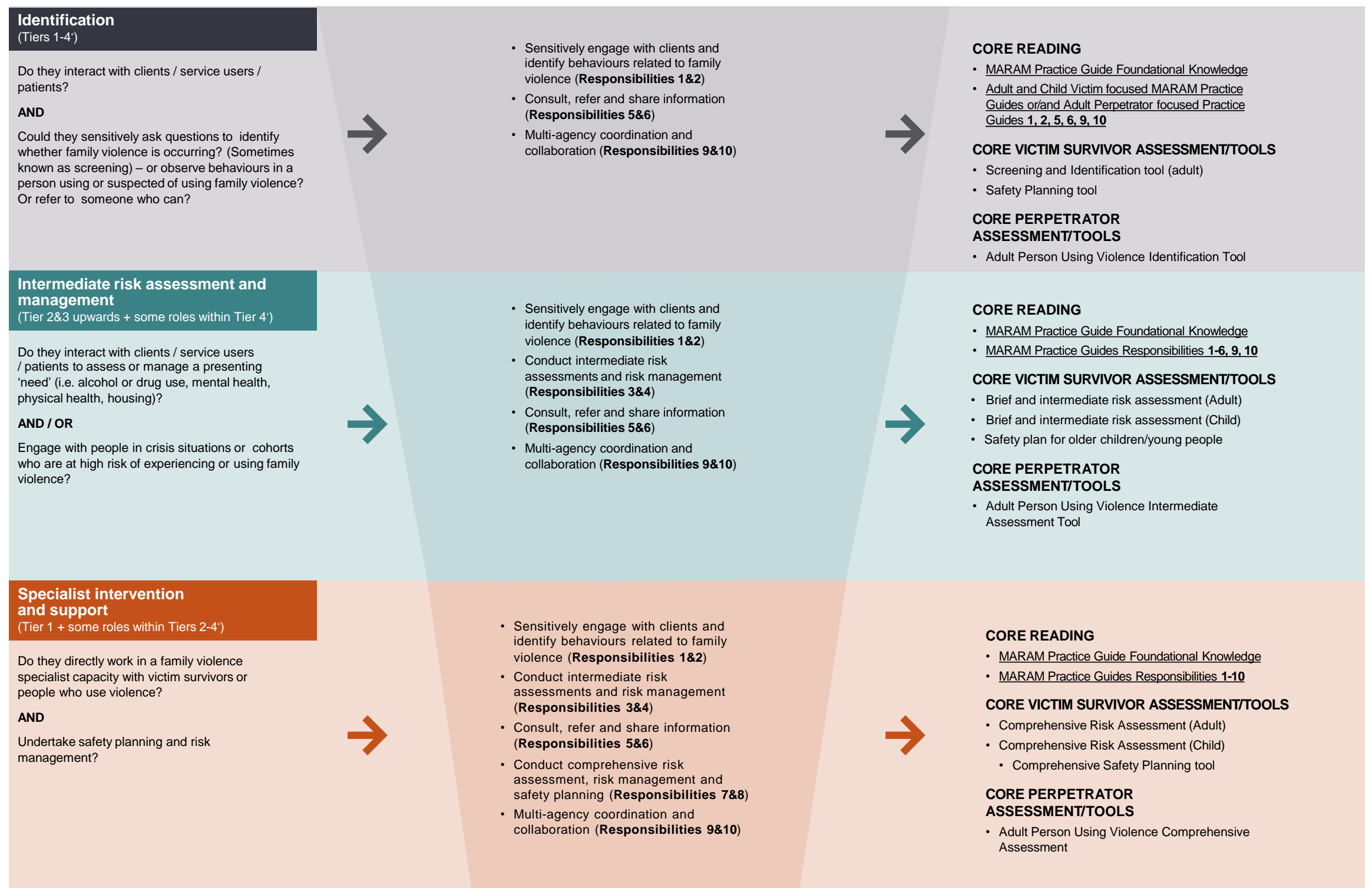
RESPONSIBILITIES

Assign MARAM **Responsibilities** to your team member

STEP 3

READING AND TOOLS

Provide core reading (Adult and Child Victim or/and Perpetrator focused) and MARAM tools to team members and signpost to training



- Training: To register for training or for more information on what training to undertake please visit <https://www.vic.gov.au/training-for-information-sharing-and-maram>.
- A note on tiers: The Responding to Family Violence Capability Framework covers four workforce tiers spanning specialist family violence services (Tier 1), core support services and professionals (Tier 2), mainstream/ social support services (Tier 3) and universal services (Tier 4). Please note this does not encapsulate or address the complexity and diversity of individual roles and programs within specific services and sectors. Rather, it provides a broad overview within which different workforces can understand the scope and limits of their role and expertise. References to tiers are included here for the sake of completeness.