



Reaction to fire test report

Test standard: [Ad-hoc test based off ISO 13785-1:2002](#)

Test sponsor: [Cladding Safety Victoria \(CSV\)](#)

System: [A cassetted aluminium composite panel wall system](#)

Job number: [RTF230139](#)

Test date: [12 December 2023](#) Revision: [R4.0](#)

Quality management

Revision	Date	Information about the report		
R4.0	21 December 2023	Description	Initial issue	
		Name Signature	Prepared by	Reviewed by
			Authorised by	

Contents

1.	Introduction	4
2.	Test specimen	4
2.1	Schedule of components	4
3.	Test procedure	7
4.	Test measurements and results	8
5.	Application of test results	14
5.1	Test limitations	14
5.2	Variations from the tested specimen	14
5.3	Uncertainty of measurements	14
Appendix A	Drawings of test assembly	15
Appendix B	Photographs	18
Appendix C	Chemical analysis results	27

1. Introduction

This report documents the findings of the first of three ad-hoc reaction to fire tests on a cassetted aluminium composite panel (ACP) external wall system - performed on 12 December 2023. The test was based on ISO 13785-1:2002.

Warringtonfire performed the test at the request of the test sponsor listed in Table 1.

Table 1 Test sponsor details

Test sponsor	Address
Cladding Safety Victoria	717 Bourke Street Docklands VIC 3808 Australia

2. Test specimen

2.1 Schedule of components

Table 2 describes the test specimen and lists the schedule of components. These were provided by the representatives of the test sponsor and surveyed by Warringtonfire. All measurements were done by Warringtonfire – unless indicated otherwise.

Detailed drawings of the test specimen are provided in Appendix A.

Table 2 Schedule of components

Item	Description	
Cladding		
1.	Item name	ACP panelling - cassetted
	Product	Vitrabond FR [*] Aluminium Composite Panel - 4 mm Dark Oak/Matte White with 0.5 mm skin. *Sample sheets were taken from older manufactured quarantined stock with a higher polyethylene content that is no longer in circulation which was received marked as 'Testing Only'.
	Manufacturer/supplier	██████████
	Material	The material was nominated as panels consisting of two layers of aluminium sheets sandwiching a layer (core) with 45 % polyethylene (PE) and inorganic filler. Analysis conducted by the analytical centre of UNSW showed that the core consisted of polyethylene-vinyl acetate (PEVA) - found to be 43.9 % w/w - whilst the remainder of the material was found to be 45.3 % magnesium hydroxide, 6.1 % calcium carbonate and 4.8 % other inert material. Refer to 0 for more detailed results - Sample 23197-1, Oak.
	Size	As shown in Figure 8. Total thickness – 4.1 mm Skin thickness (both sides) – 0.5 mm Cassette depth – 150 mm
	Batch number	1609418
	Measured mass/unit area densities	Panel areal density – 6.9 kg/m ²
	2.	Item name
Product		██████████ 13 mm Fyrchek
Manufacturer/supplier		██████████
Size		Measured board: 3000 mm × 1200 mm × 13 mm

Item	Description	
	Batch date	16/08/22
	Areal density (measured)	11.0 kg/m ²
3.	Item name	Backpan
	Product	0.9 mm thick Galvabond steel
	Supplier	
	Size	Measured: 1160 mm wide × 3700 mm tall, 0.9 mm thick – in segments
Framing		
4.	Item name	Test rig frame - 90 × 90 SHS and 200 × 90 PFC frame
	Size	90 mm × 90 mm × 5 mm thick and 200 mm × 90 mm × 10 mm thick – refer to Figure 7.
5.	Item name	Aluminium curtain wall transom/mullions (rectangular hollow sections) - framing
	Size	65 mm wide × 120 mm deep × 3 mm thick Total frame size: 120 mm deep × 1165 mm wide × 3705 mm tall
	Manufacturer/supplier	Capral Aluminium
6.	Item name	Aluminium angles - framing
	Size	20 mm wide × 30 mm deep × 3 mm thick
	Manufacturer/supplier	Rapid Aluminium
7.	Item name	Aluminium stiffener - framing
	Size	3 mm thick
	Manufacturer/supplier	Rapid Aluminium
8.	Item name	Internal side frame - steel
	Size	Studs and noggings: 90 mm deep × 36 mm wide × 0.55 BMT
	Installation	The steel framing members were riveted (item 16) to one another.
9.	Item name	Strap – 50 mm wide
	Size	Studs and noggings: 90 mm deep × 36 mm wide
	Installation	The steel framing members were riveted (item 16) to one another.
Smoke seal		
10.	Item name	Smoke seal
	Size	1 mm thick galvanised steel
	Manufacturer/supplier	Atlas Steel
Insulation		
11.	Item name	90 mm thick polyethylene terephthalate (PET) insulation
	Density	10 kg/m ³
	Manufacturer/supplier	Pricewise Insulation
Sealant/Adhesive		
12.	Item name	Weathering sealant
	Product type	Silicone sealant
	Product name	PROSIL 41Im
	Manufacturer/supplier	Admil Adhesives

Item	Description	
	Usage	Placed at ACP edges and over screw and rivet locations.
Fixings		
13.	Item name	Wafer head screws – zinc coated steel
	Size	10g × 16 mm long
	Installation	Used to fix aluminium angles (item 6) to the aluminium frame (item 5) at 500 mm centres
14.	Item name	Wafer head screws – zinc coated steel
	Size	10g × 50 mm long
	Installation	Used to fix ACP (item 1) to the aluminium stiffener (item 7) – four per corner.
15.	Item name	Hex head tek screw – zinc coated steel
	Size	12g × 16 mm long
	Installation	Used to fix aluminium stiffeners (item 7) to themselves
16.	Item name	Steel rivets
	Size	Ø4 mm
17.	Item name	Plasterboard screws
	Size	6g × 32 mm long, bugle head, self-drilling screws
18.	Item name	Fast-fix washers and pin weld
	Size	115 mm × 3 mm pins and 25 mm × 25 mm fast fix washers.
Installation method		
Internal wall:	The test rig frame (item 4) was the main support for the test specimen, however, there were two C-purlin sections that acted as false slabs (200 mm tall). Steel stud framing (item 8) was installed between the C-purlins. The steel framing (item 8) was capped with 13 mm thick FR plasterboard (item 2) on the unexposed side and along the edges. The plasterboard was fixed with plasterboard screws (item 17) – max 300 mm centres on the periphery and 600 mm centres in-field.	
External wall:	<p>The external section of the wall system largely consisted of an aluminium extrusion framing system (item 5), galvanised steel sheet backpan (item 3) and ACP cassette system (item 1). The external wall was screw fixed using angles. The ACP cassettes were 150 mm deep and were connected to the aluminium extrusion framing (item 5) using aluminium angles (item 6) and aluminium stiffeners (item 7). The angles (item 6) were screw fixed to the extrusions, the aluminium sheeting riveted to the angles, and the ACP cassettes riveted to the aluminium sheets. Sealant (item 12) was used to seal open ACP edges, screw fixings and rivet locations.</p> <p>The backpan (item 3) was screw fixed and riveted to the back of the aluminium extrusion framing (item 5). PET insulation (item 11) was installed within the external wall. The insulation was held to the steel backpan (item 3) with the aid of fast-fix washers and pin combinations (item 18) – at ~600 mm centres – that were welded to the backpan. There was a 60 mm gap between the backpan and the internal wall studwork.</p>	

3. Test procedure

Table 3 details the test procedure for this reaction to fire test.

Table 3 Test procedure

Item	Detail	
Statement of compliance	The ad-hoc test – which was based off ISO 13785-1:2002 - was performed to determine the reaction to fire performance of an external wall cladding when exposed to heat from a simulated external fire with flames impinging directly upon a façade. The test utilises a burner used in ISO 13785-1:2002 with the specimen mimicking the as-built construction of the façade.	
Sampling / specimen selection	The laboratory was not involved in sampling or selecting the test specimen for the reaction to fire test. The results obtained during the test only apply to the test samples as received and tested by Warringtonfire.	
Test duration	90 minutes	
Ambient laboratory temperature	Start of the test	24 °C
	Minimum temperature	24 °C
	Maximum temperature	29 °C
Instrumentation and equipment	<ul style="list-style-type: none">• Eight mineral insulated metal sheathed (MIMS) Type K thermocouples with an overall diameter of 1.5 mm with the measuring junction insulated from the sheath were positioned 60 mm in front of the face of the test specimen. Refer to Figure 1 (TC011 – TC018) for details on positioning.• Ten mineral insulated metal sheathed (MIMS) Type K thermocouples with an overall diameter of 1.5 mm with the measuring junction insulated from the sheath were positioned inside the specimen at the centre of the cavity. Refer to Figure 1 (TC001 – TC010) for details on positioning.• Three mineral insulated metal sheathed (MIMS) Type K thermocouples with an overall diameter of 1.5 mm with the measuring junction insulated from the sheath were positioned on the face of ACP, 50 mm from the top edge. Refer to Figure 1 (TC019 – TC021) for details on positioning.• The incident heat flux on the top of the specimen in line with the front face of test specimen was measured using one Schmidt-Boelter type heat flux gauge with a range of 0-50 kW/m².• The fire source was a propane (95% purity) gas burner 1.2 m long × 0.1 m deep × 0.15 m tall. The burner was placed on the floor below the specimen with approximately 10 mm overlap with the ACP.	
Test procedure	<ul style="list-style-type: none">• At least two minutes of baseline data was collected prior to burner ignition. Temperature and heat flux data was collected at 5 s intervals.• The heat output from the burner was held at 100 kW for the first 15 minutes of the test followed by 300 kW for the following 25 minutes of the test. After the burner was then turned off, the specimen was monitored for the remainder of the test.	
Test number	Test one of one.	
Variation between tests	The test was based off RTF220104 R1.0, RTF220104 R2.0, RTF220104 R3.0 and RTF230111 R1.0. The test specimens for those tests were considered a representation of an in-situ wall located at the listed location. The tested specimen in this test was considered a replica of those tests with minor variations. One variation was the ACP used, i.e., variation to the percentage of polyethylene in the core, presence of fire-retarding materials in the core and the thickness of panel and panel skin. The other variation was the configuration of insulation, i.e., an absence of rockwool insulation, and the location of the PET insulation.	

4. Test measurements and results

The results from the tests are summarised below. Photographs of the specimen are included in Appendix B.

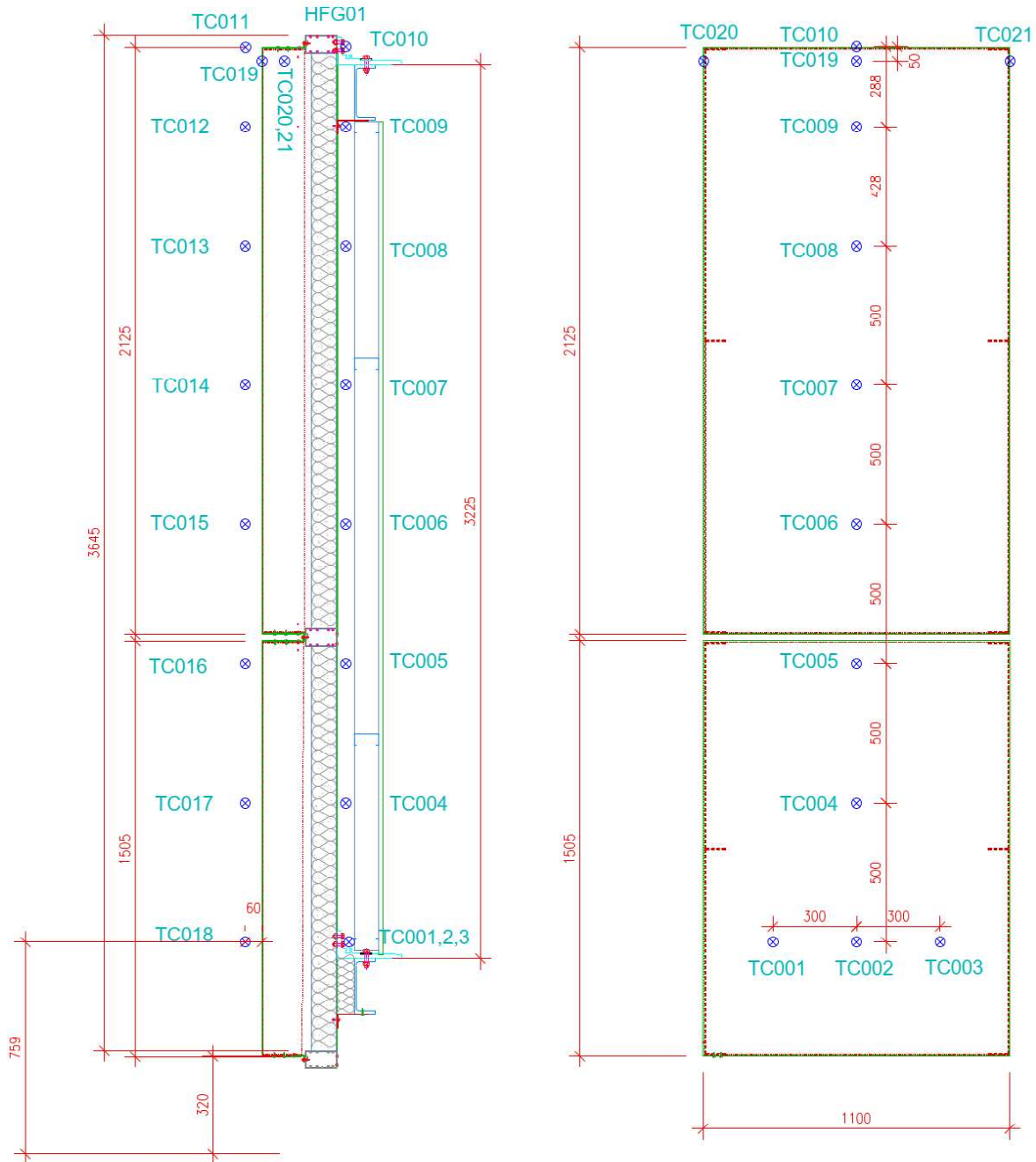


Figure 1 Instrumentation location

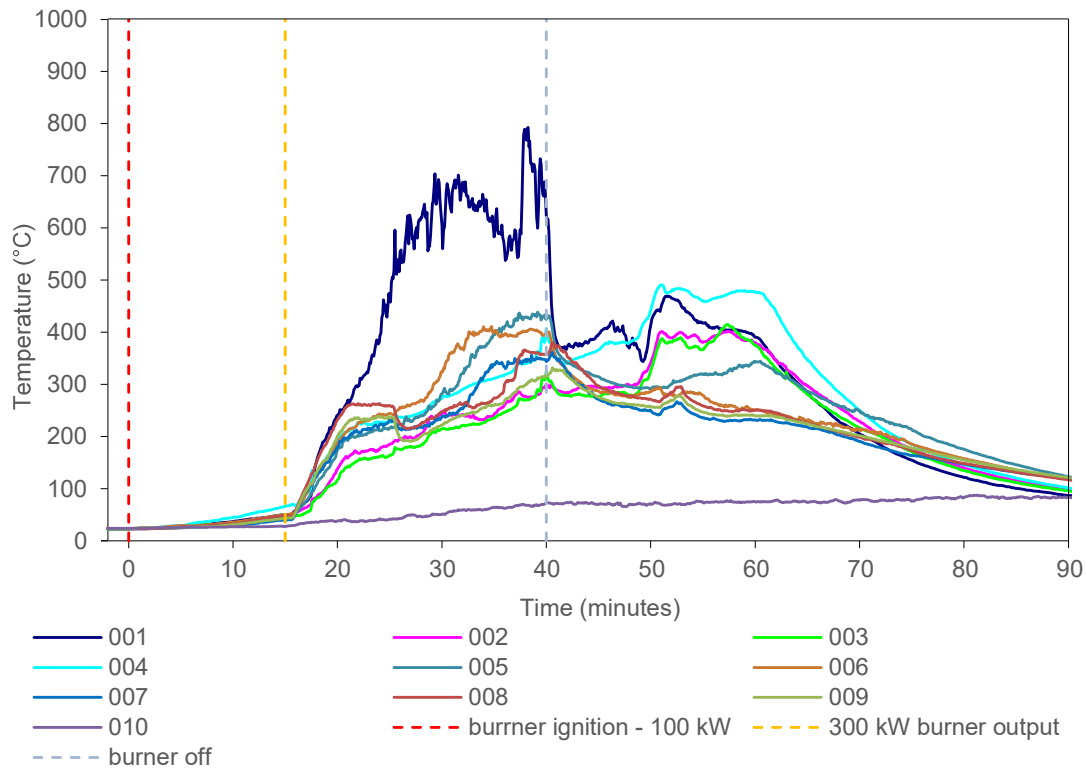


Figure 2 Internal temperature data collected by thermocouples placed within the cavity – between the internal and external segments of the specimen.

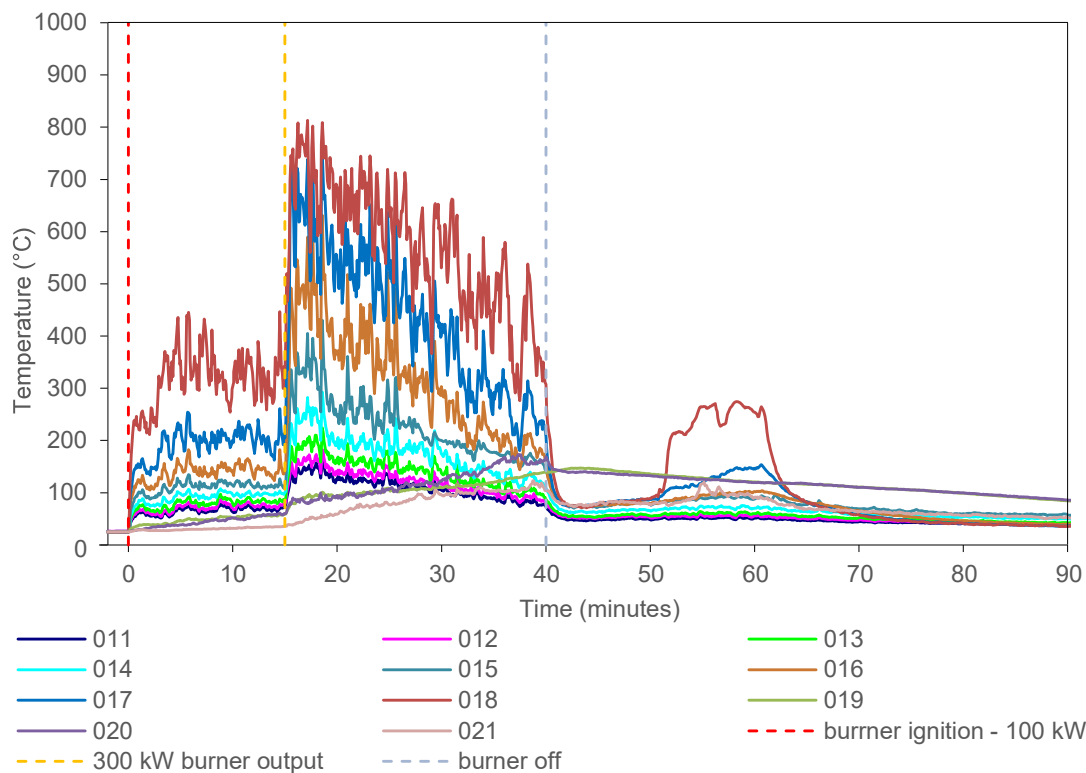


Figure 3 External temperature data collected by thermocouples placed 60 mm from the front face of the specimen.

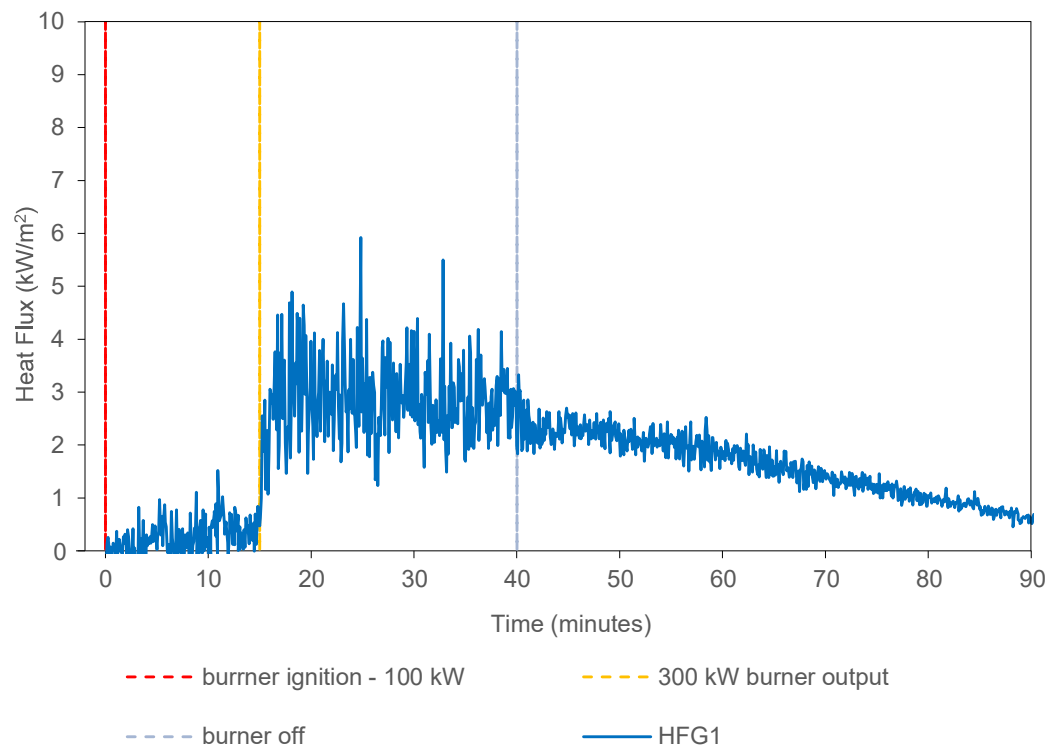


Figure 4 Heat flux data collected by heat flux gauge.

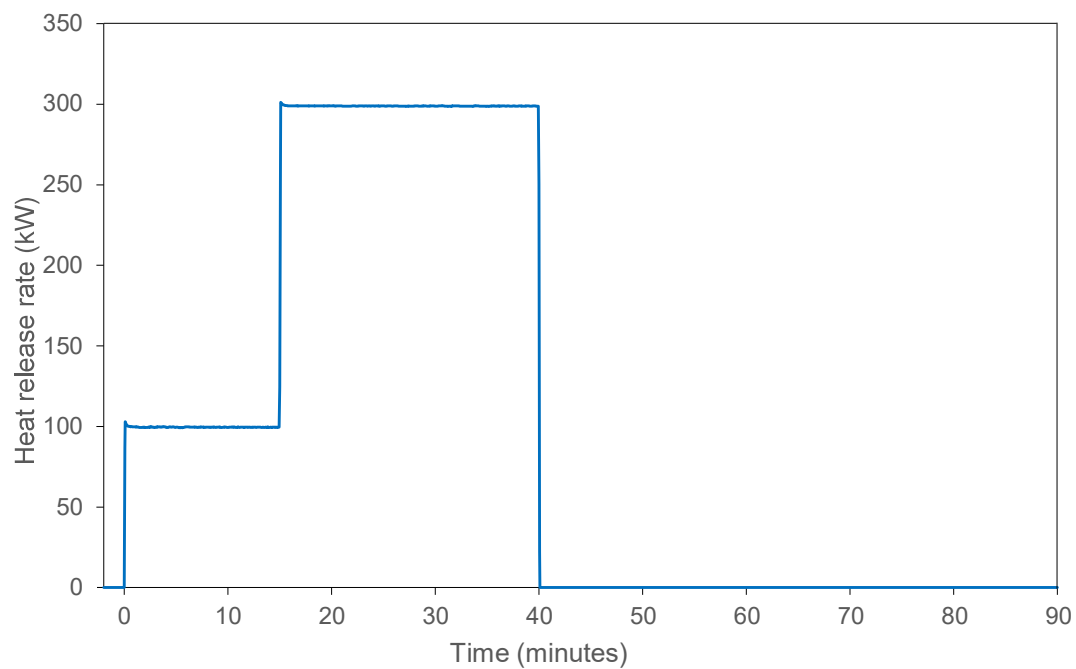


Figure 5 Heat release rate of burner.

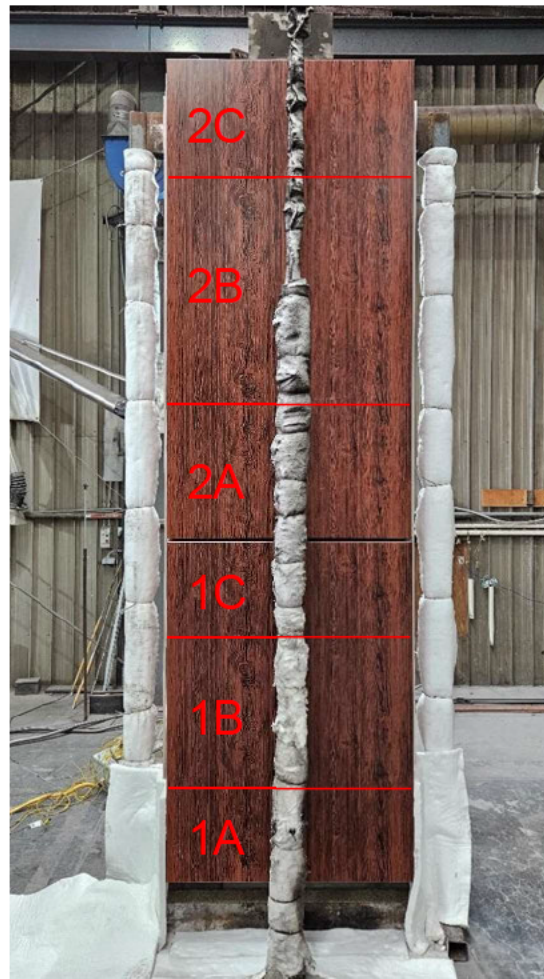


Figure 6 Designation for test specimen observations.

Table 4 shows the observations of any significant behaviour of the specimen during the test.

Video recordings were also taken of the test. A copy of the video recording is available upon request from the test sponsor or by contacting Cladding Safety Victoria. The video of the test should be viewed in conjunction the contents of this report.

Table 4 Test observations

Time		Section	Observation
Min	Sec		
-2	00	All	Data collection started.
0	00	All	The reaction to fire test was started with the burner ignited with a heat output set at 100 kW.
0	32	1A/1B	Flames had reached a height of 1B.
0	48	All	Smoke was emitting from the sides of the specimen.
2	09	1A	Debris fell from the specimen.
3	12	1B/1C	Flames had reached a height of 1C.
3	28	1A	Flaming debris fell from the specimen.
4	33	1A	The skin had become discoloured.
4	57	1A	The panel skin was peeling off.
5	45	1B/1C	The skin had become discoloured.
8	00	1C/2A	Flames at the sides of the specimen had reached a height of 2A.
15	00	All	The burner output was increased to 300 kW.
15	07	1C/2A	Flames at the front of the specimen had reached a height of 2A.
15	33	1A/1B/1C	The panel skin was peeling off.
16	30	All	Smoke emissions from the specimen had decreased.
18	54	2A/2B	The skin was becoming discoloured.
20	21	1C/2A	The joint sustained flaming which appeared to be independent of the burner, on the right side.
21	22	1C/2A	The joint sustained flaming which appeared to be independent of the burner, on the left side.
25	22	2A/2B/2C	A buildup of gas was released from the lower portion of the top panel. A hole had opened in the lower left side of the top panel.
26	07	All	Smoke emissions from the specimen had increased.
37	08	1A	A small flame was present at the back of the specimen below the plasterboard.
38	51	2A	Flaming at the corner of the panel increased.
40	00	All	The burner was switched off.
41	48	1A/1B/1C /2A	The specimen continued to flame at the sides.
49	00	2A	Flaming of the top panel decreased.
50	46	1A	A large pile of flaming debris collapsed out of the underside of the specimen at the centre.
54	24	1A	A large pile of flaming debris collapsed out of the underside of the specimen at the right.
54	25	1A/1B/1C	Flaming on the right side of the specimen increased.
54	55	1C/2A	Intermittent flaming at the joint.
55	30	1C/2A	The joint maintained a sustained flame.

Time		Section	Observation
Min	Sec		
56	18	1A	The front face of the panel cracked open at the bottom right. The panel was flaming on the inside.
57	18	1A/1B/1C	The left side of the panel had stopped flaming.
69	19	All	Flaming decreased.
77	38	1C/2A	Flaming at the join ceased.
82	46	All	All visible flaming ceased.
90	00	All	The reaction to fire test ended.

5. Application of test results

5.1 Test limitations

The results of these fire tests may be used to directly assess fire hazard, but it should be recognised that a single test method will not provide a full assessment of fire hazard under all fire conditions.

These results only relate to the behaviour of the specimen of the element of construction under the particular conditions of the test. They are not intended to be the sole criteria for assessing the potential fire performance of the element in use, and they do not necessarily reflect the actual behaviour in fires.

5.2 Variations from the tested specimen

This report details methods of construction, the test conditions and the results obtained when the specific element of construction described here was tested following the procedure outlined in Table 3. Any significant variation with respect to size, construction details, loads, stresses, edge or end conditions is not addressed by this report.

It is recommended that any proposed variation to the tested configuration should be referred to the test sponsor. They should then obtain appropriate documentary evidence of compliance from Warringtonfire or another accredited testing authority.

5.3 Uncertainty of measurements

Because of the nature of reaction to fire testing and the consequent difficulty in quantifying the uncertainty of measurements obtained from a reaction to fire test, it is not possible to provide a stated degree of accuracy of result.

Appendix A Drawings of test assembly

The drawings of the test assembly in Figure 7 to Figure 10 were provided by representatives of Warringtonfire. Dimensions, unless specified, are in mm.

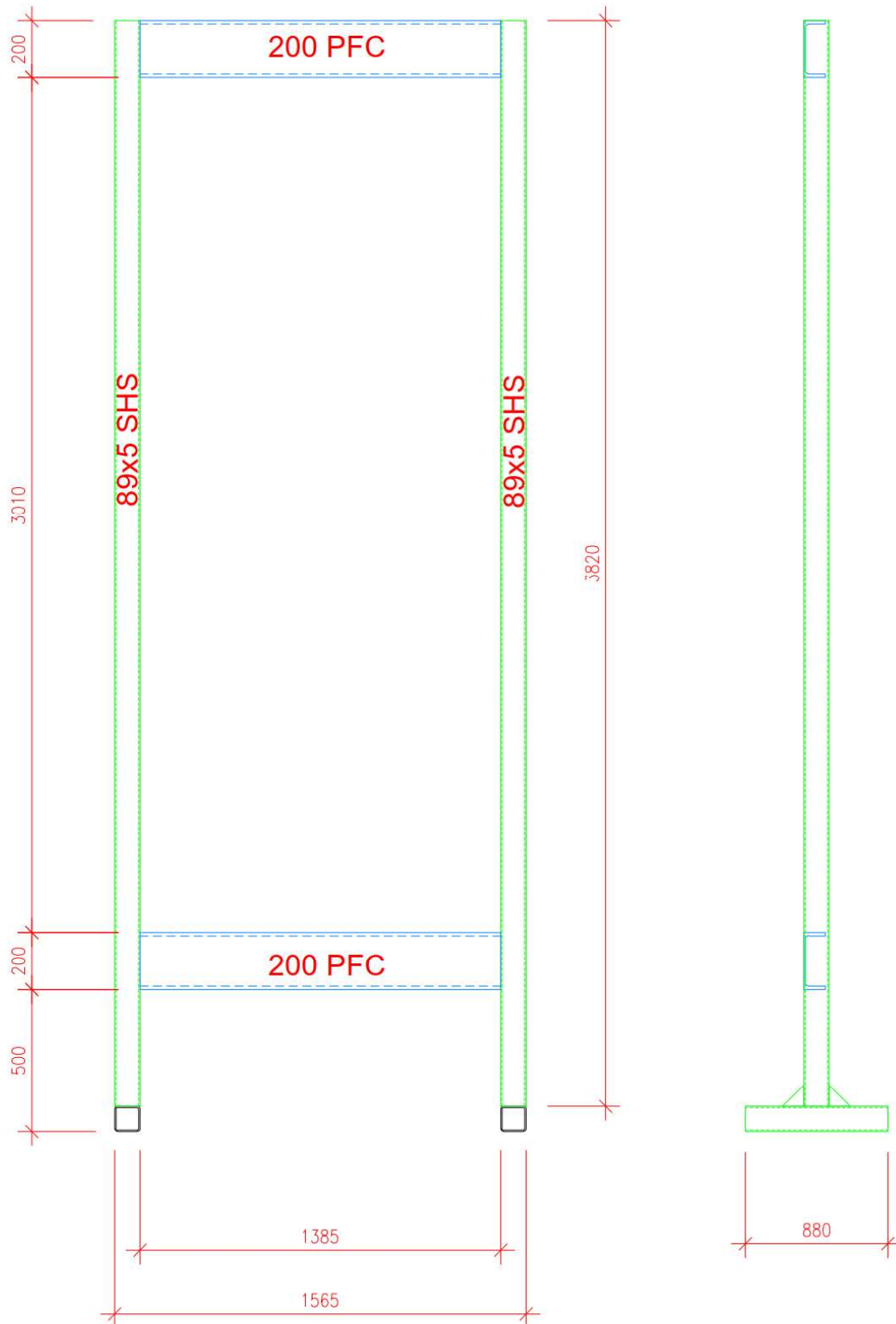


Figure 7 Elevation of rig support.

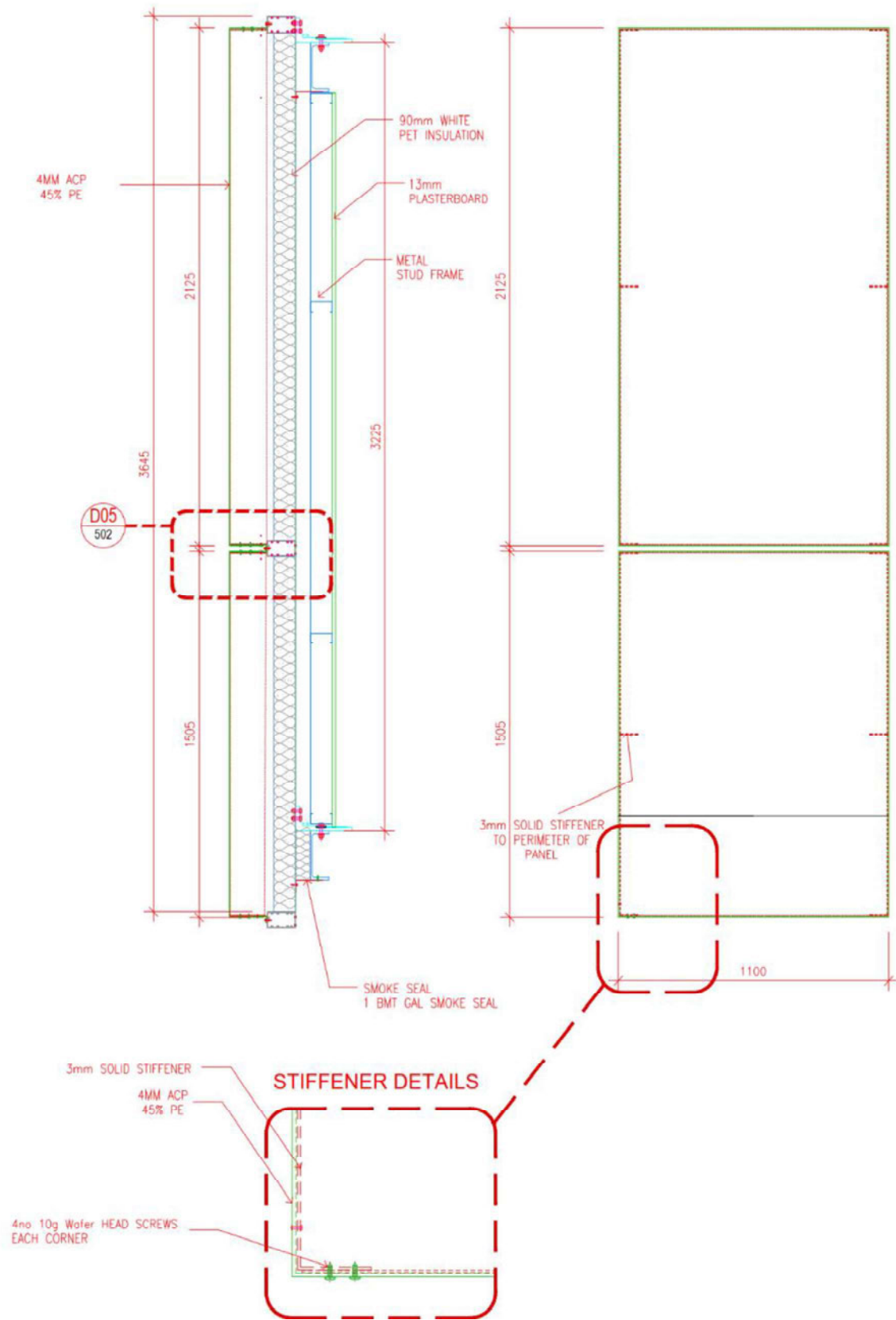


Figure 8 System assembly – Front and side view

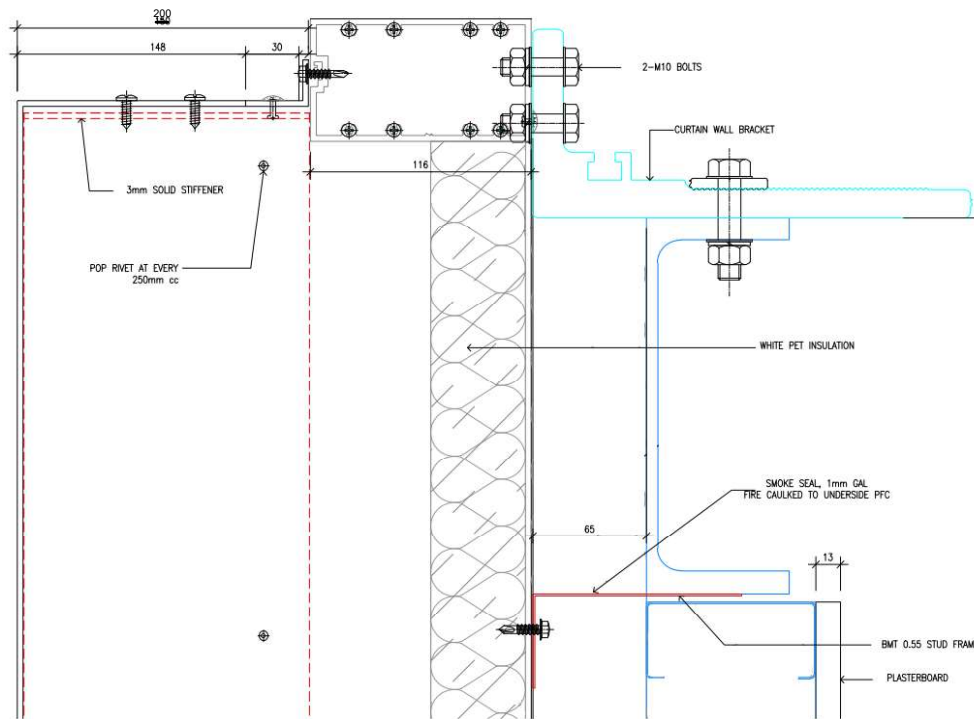


Figure 9 System assembly – top edge detail

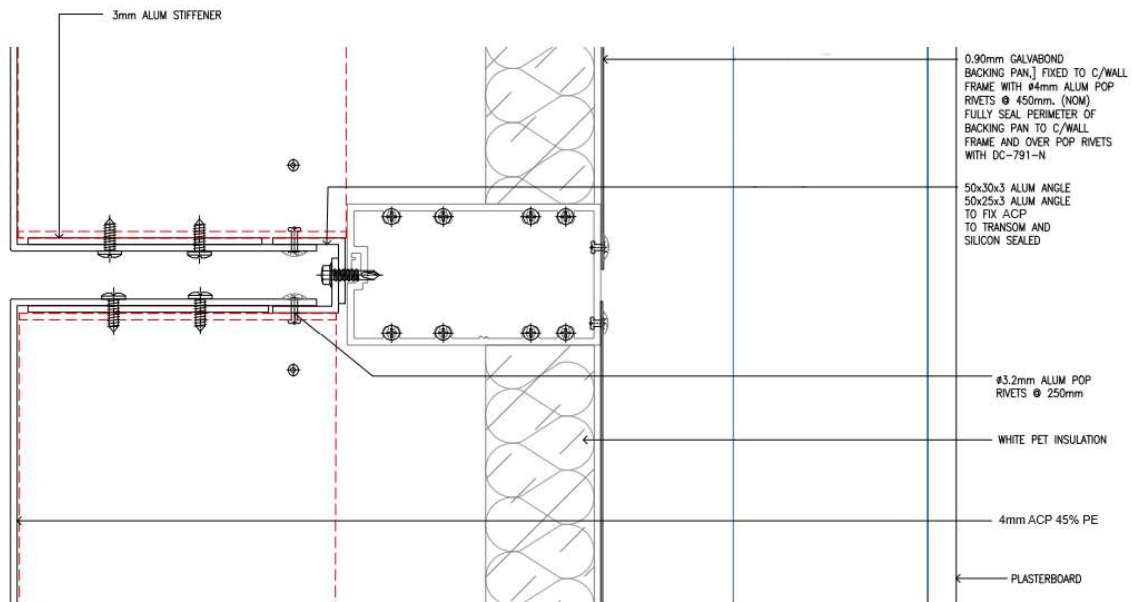


Figure 10 System assembly – middle join detail (D05)

Appendix B Photographs

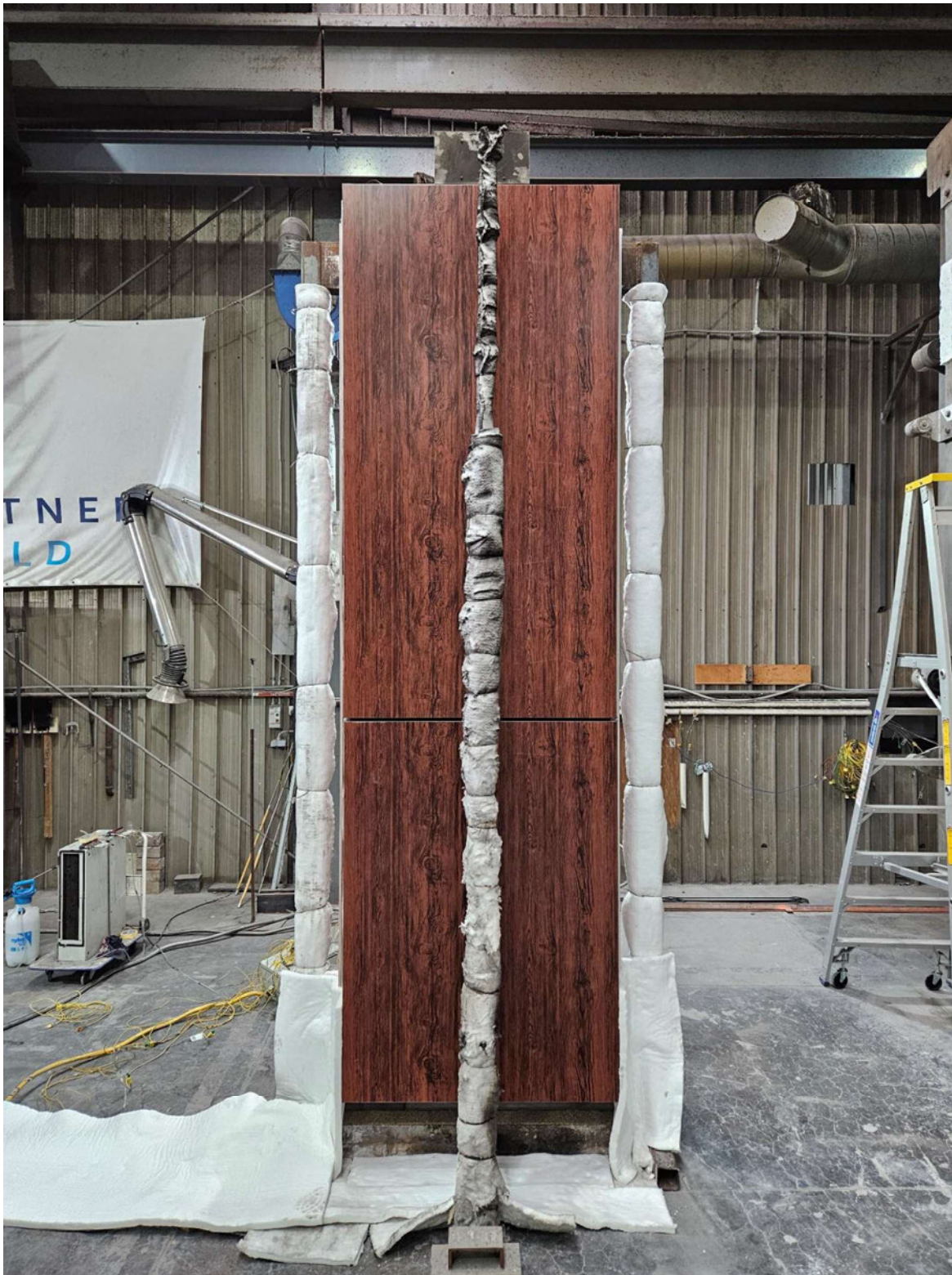


Figure 11 The specimen before the reaction to fire test



Figure 12 The specimen before the reaction to fire test – unexposed side

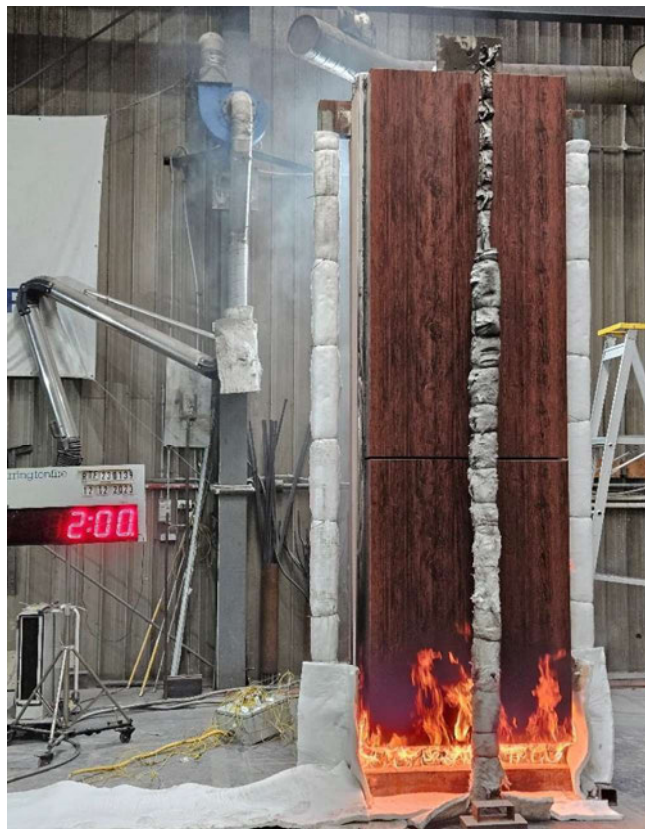


Figure 13 The specimen 2 minutes into the test (burner output at 100 kW)

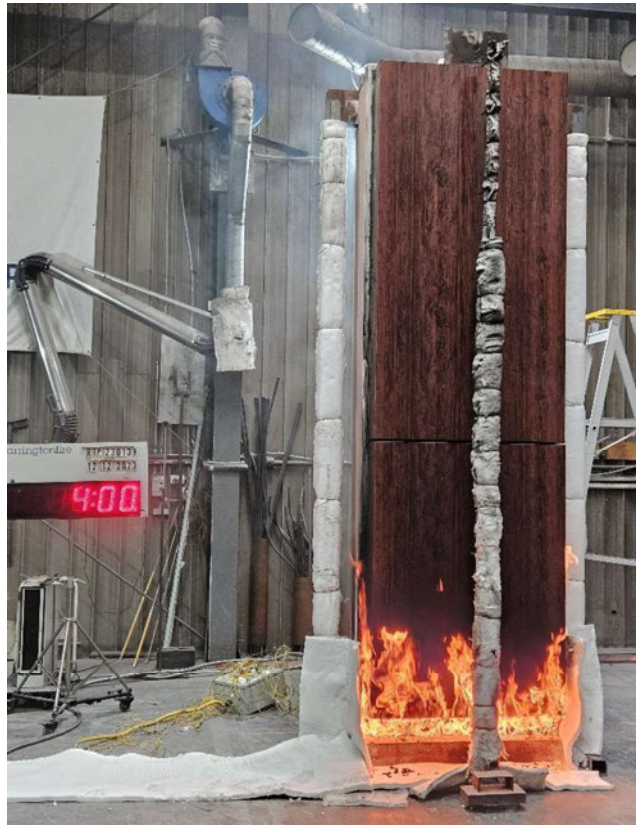


Figure 14 The specimen 4 minutes into the test (burner output at 100 kW)

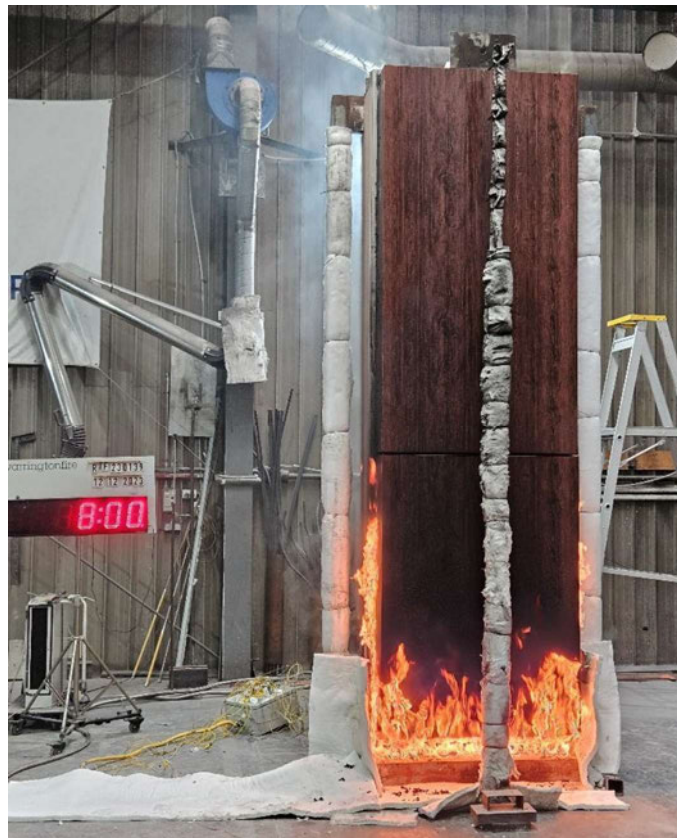


Figure 15 The specimen 8 minutes into the test (burner output at 100 kW)



Figure 16 The specimen 15 minutes 45 seconds into the test (45 seconds after burner output was changed to 300 kW)

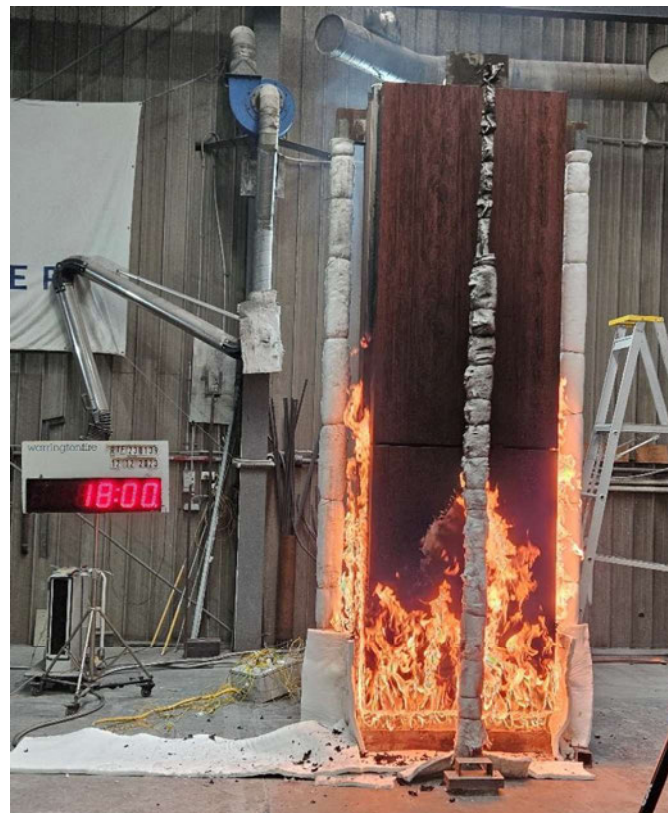


Figure 17 The specimen 18 minutes into the test (3 minutes after burner output was changed to 300 kW)



Figure 18 The specimen 25 minutes 6 seconds into the test (10 minutes 6 seconds after burner output was changed to 300 kW)

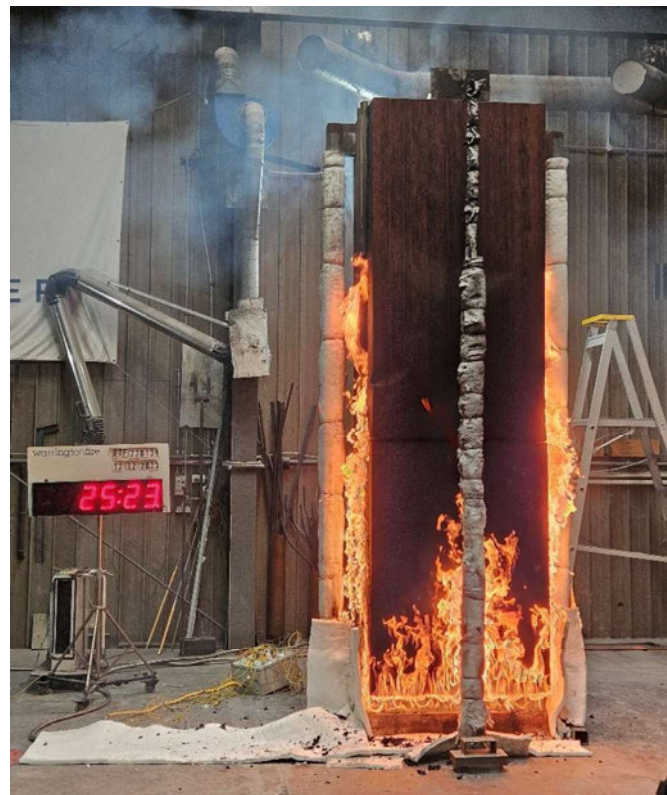


Figure 19 The specimen 25 minutes 23 seconds into the test (10 minutes 23 seconds after burner output was changed to 300 kW)

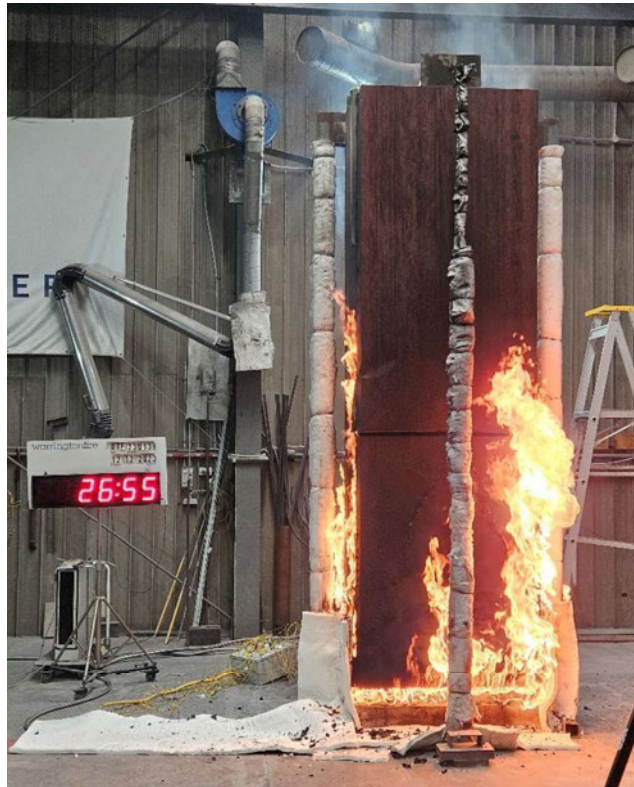


Figure 20 The specimen 26 minutes 55 seconds into the test (11 minutes 55 seconds after burner output was changed to 300 kW)

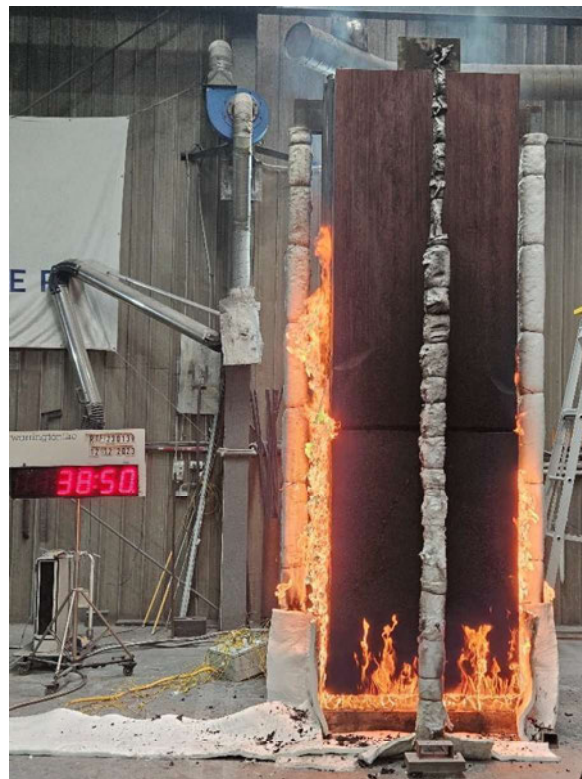


Figure 21 The specimen 38 minutes 50 seconds into the test (23 minutes 50 seconds after burner output was changed to 300 kW)



Figure 22 The specimen 40 minutes 30 seconds into the test (25 minutes 30 seconds after burner output was changed to 300 kW)

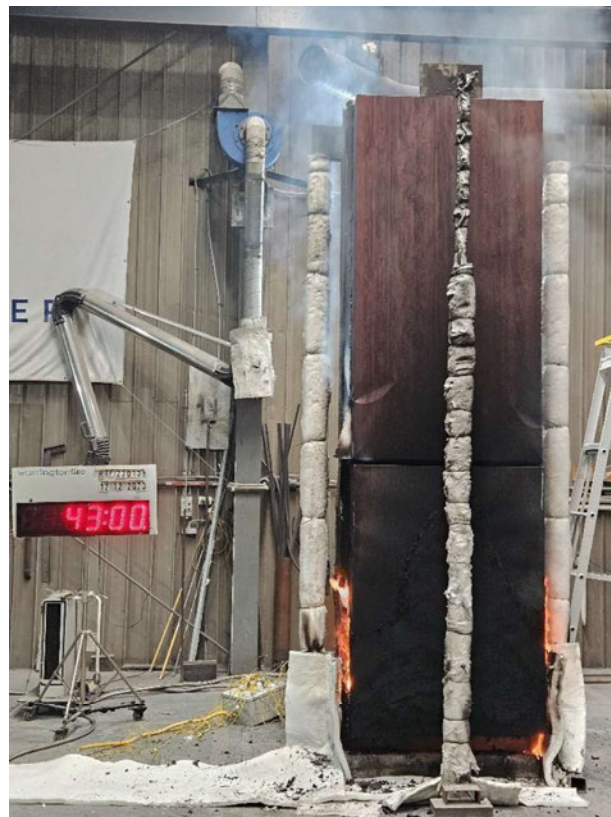


Figure 23 The specimen 43 minutes into the test (3 minute after burner was switched off)



Figure 24 The specimen 54 minutes 26 seconds into the test (14 minutes 26 seconds after burner was switched off)



Figure 25 The specimen 56 minutes 45 seconds into the test (16 minutes 45 seconds after burner was switched off)



Figure 26 The specimen 68 minutes 30 seconds into the test (28 minutes 30 seconds after burner was switched off)

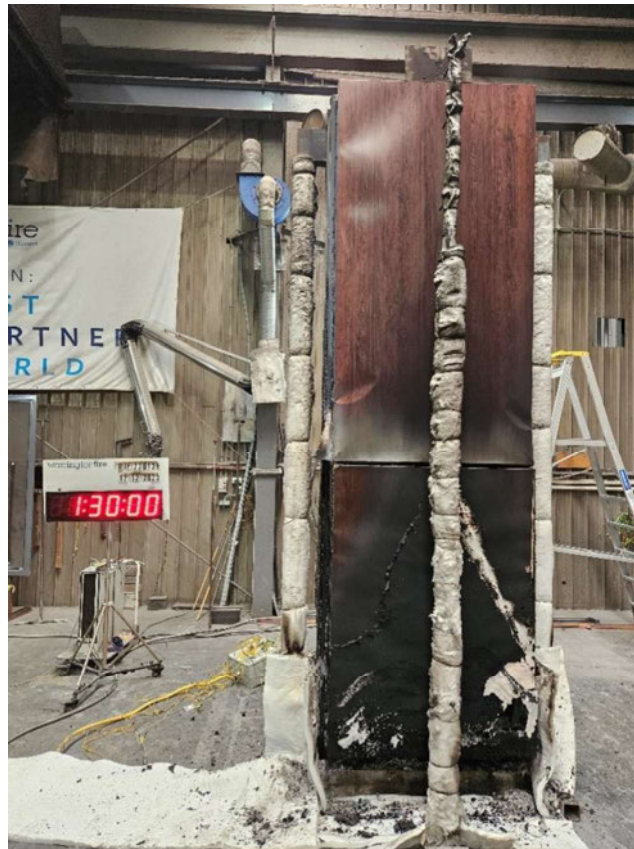


Figure 27 The specimen at the end of the test

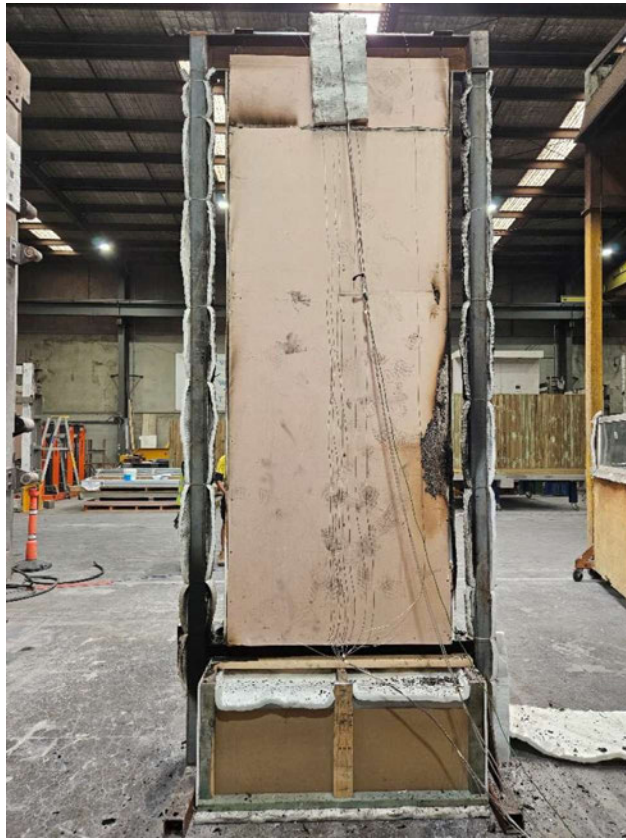


Figure 28 The specimen after the test – unexposed side.



Figure 29 The specimen after the test – underside.

Appendix C Chemical analysis results



UNSW RESEARCH INFRASTRUCTURE

Chemical Consulting Laboratory

Mark Wainwright Analytical Centre
UNSW Sydney NSW 2052 Australia

T: +61(2) 9348 1400 | E: ccl@unsw.edu.au
W: www.analytical.unsw.edu.au/contact-us/commercial-consulting
ABN 57 195 873 179 | CRICOS Provider Code 00098G

Test Report

Prepared by:

ANALYSIS OF CLADDING SAMPLES

REF: UB8388

For

Company: Warrington Fire
Contact: [REDACTED]
Date: 17 October 2023

Project No: 23197

Prepared by: [REDACTED]
Approved by: [REDACTED]

COMMERCIAL-IN-CONFIDENCE

Any use of the Test Report, use of any part of it, use of the names University of New South Wales or UNSW, use of the name of any Unit of UNSW, or use of the name of the consultant in direct or indirect advertising or publicity is strictly forbidden.



Analysis of Cladding Samples

REF: UB8388

1. SAMPLES

One plastic sachet containing two ACP cores was received for analysis. The samples were identified as follows:

CCL sample coding	Client sample coding
23197-1	Oak
23197-2	Silver

CCL has been asked to identify the polymer and the filler (s) in the samples by FT/IR, quantitate and identify the mineral filler in the samples and classify them in accordance with the ICA cladding scheme.

2. METHODOLOGY AND RESULTS

The aluminium metal was removed from the ACPs cladding polymer, and the flat surface of the polymer samples was abraded to remove any surface adhesive. The surface of each sample was analysed directly by FTIR. The FT-IR spectrum is presented in Figures 1-2.

The core of each sample was then ashed to determine its percentage mineral content (Table 1). If sufficient (>0.5 g) ash had been produced it was analysed for elemental composition by X ray fluorescence spectroscopy. Results are presented in Table 2.

Table 1 Ash content of samples.

Sample coding	Ash content (w/w%)
23197-1	39.5
23197-2	21.6

Table 2 Elemental composition of 23197-1

Element Oxide wt. %	23197-1
Na ₂ O	0.45
MgO	79.26
Al ₂ O ₃	0.39
SiO ₂	4.87
P ₂ O ₅	0.12
SO ₃	0.26
K ₂ O	0.04
CaO	8.66
TiO ₂	2.24
V ₂ O ₅	0.01
Cr ₂ O ₃	<0.01
Mn ₃ O ₄	0.04
Fe ₂ O ₃	0.55
NiO	<0.01
CuO	<0.01
ZnO	0.01
SrO	<0.01
ZrO ₂	<0.01
BaO	0.09
HfO ₂	<0.01
PbO	<0.01
L.O.I.	ND

NOTE: (i) L.O.I.= loss on ignition at 1,050 °C.
(ii) ND = not determined



3. CONCLUSIONS

The cladding sample #1 consisted of consisted of 45.3% magnesium hydroxide, 6.1% calcium carbonate, 4.8% other inert material and approximately 43.9% polyethylene/EVA copolymer.

The cladding sample #1, is classified as ICA category A.

The cladding sample#2 consisted of consisted of 21.6% inert material and approximately 78.4% polyethylene/EVA copolymer.

The cladding sample #2, is classified as ICA category A.

The ICA Classification assigned is correct as per the September 2020 revision of the ICA Guidelines.

The calculation for magnesium hydroxide content assumes that all magnesium found is present as the hydroxide. The calculation for calcium carbonate content assumes that all calcium found is present as calcium carbonate.

The reader is reminded that we can only analyse and classify the content of samples actually presented to us. We can offer no guarantee that this composition or classification is valid for cladding as a whole, because some types of cladding can be inhomogeneous, and a sample may not be representative of the cladding as a whole. Anyone using our results should consider these sampling issues and uncertainties before they generalise the results we present to anybody of cladding as a whole.

Technical Officer

Chemical Consulting Laboratory

Mark Wainwright Analytical Centre, UNSW

17 October 2023



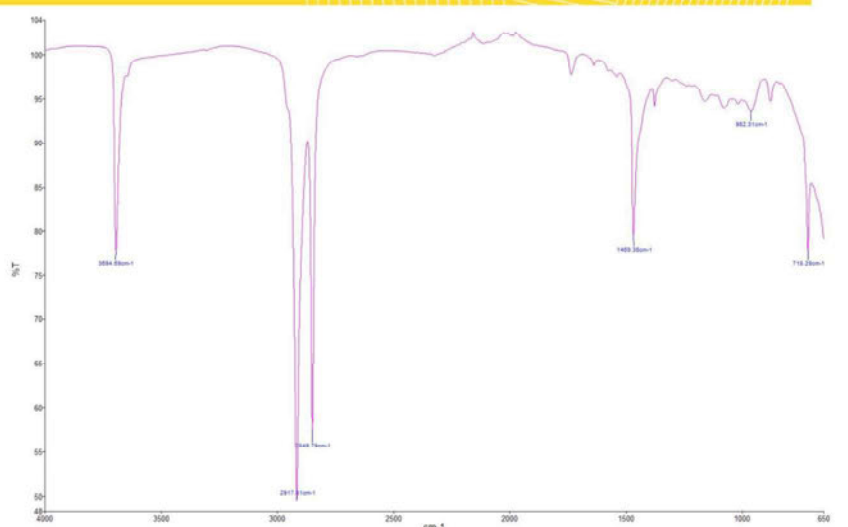


Figure 1. FT-IR spectrum of Sample #1

Project No.: 23197

Chemical Consulting Laboratory - UNSW

Page 5 of 6

This report shall not be reproduced, except in full, without written approval of the CCL

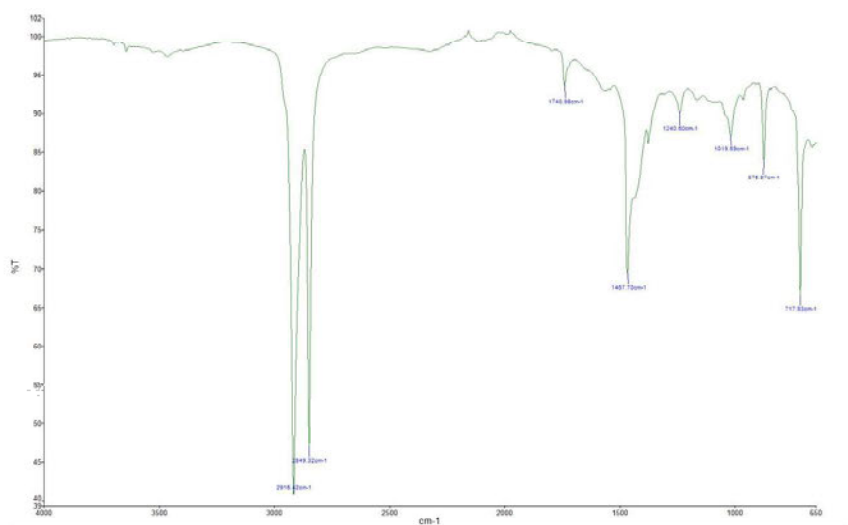


Figure 2. FT-IR spectrum of sample #2



Project No.: 23197

Chemical Consulting Laboratory - UNSW

Page 6 of 6

This report shall not be reproduced, except in full, without written approval of the CCL



Warringtonfire Australia Pty Ltd
ABN 81 050 241 524

Perth

Suite 4.01, 256 Adelaide Terrace
Perth WA 6000
Australia
T: +61 8 9382 3844

Canberra

Unit 10, 71 Leichhardt Street
Kingston ACT 2604
Australia
T: +61 2 6260 8488

Melbourne

Level 4, 152 Elizabeth Street
Melbourne Vic 3000
Australia
T: +61 3 9767 1000

Sydney

Suite 802, Level 8, 383 Kent Street
Sydney NSW 2000
Australia
T: +61 2 9211 4333

Brisbane

Suite B, Level 6, 133 Mary Street
Brisbane Qld 4000
Australia
T: +61 7 3238 1700

Melbourne – NATA accredited laboratory

409-411 Hammond Road
Dandenong South Vic 3175
Australia
T: +61 3 9767 1000

General conditions of use

The data, methodologies, calculations and results documented in this report specifically relate to the tested specimen/s and must not be used for any other purpose. This report may only be reproduced in full. Extracts or abridgements must not be published without permission from Warringtonfire.