

FISHERMANS BEND PRECINCT


**Achievements
& Progress
by 2025**



HOUSING



VISION:

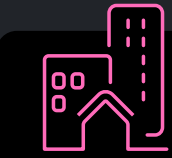
**80,000 people
& 80,000 jobs
by 2050**

Strong Partnerships - Key Delivery partners

- City of Melbourne
- City of Port Phillip
- FB Development Board 2018-2023
- Bunurong Land Council
- South East Water
- Melbourne Water

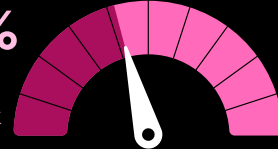


FB IDEAs



15k
Dwellings for 32k residents

41%
of the
framework
target



4.7k dwellings
delivered or
under construction

✓ **On track** to meet projections for
5000 dwellings by 2025/26

✓ Development tracking **ahead** of projections in:



DWELLINGS

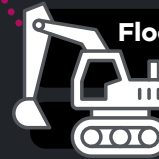
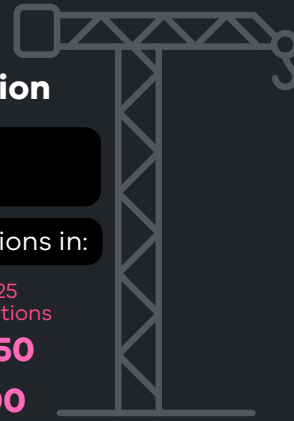
**Montague
Wirraway**

built/
in delivery

**3275
750**

2025
projections

**2450
200**

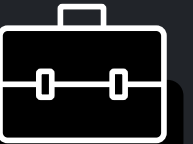


\$7b

**Total development
pipeline across
60+ sites** as at May 2025

Floorspace for **10k new jobs** (26% of target)
in addition to estimated **30k existing**

14k construction jobs



90%

of **land** in
Fishermans Bend
is **privately owned**

private development activity is **key to success**



Social and affordable housing
development pipeline
currently includes:



Almost

600 affordable
dwellings



100

social
housing
dwellings

6%

target being
achieved



TRANSPORT



VISION:

- 80% Transport movement to be made by public transport, walking and cycling
- An integrated transport strategy including cycle paths, tram lines and underground rail line



1.5k
new weekly
bus services
since 2022

... on routes between
Fishermans Bend and the **City**



\$15m

for **public
transport** planning

Station locations and **rail route** confirmed for
Docklands, Sandridge and **Innovation Precinct**

\$16m

road safety
upgrades




... plus \$1.5m **Road Safety Plan**,
to support **safe access to schools**



TRANSPORT

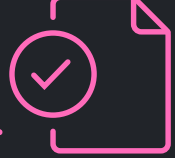
PLANNING WORK

to support urban renewal



COMPLETED


Planning for **future rail tunnel**



IN PROGRESS...

2023-2025 further surface **transport planning**

SUSTAINABILITY




VISION:

Fishermans Bend is a benchmark for **sustainable** and **resilient** urban transformation

6 Star Green Star


Community rating awarded for **Montague Precinct** (2025)

Represents World Leadership in sustainable precincts



Water Sensitivity City Strategy (2022)


Integrated water management at precinct wide, street and building scale



Net Zero Emissions Strategy (2019)

EDUCATION

VISION: Primary and Secondary Schools across Fishermans Bend



DELIVERED

Montague South Melbourne Primary School (2018)

Wirraway Port Melbourne Secondary School (2022)

IN DELIVERY...

Wirraway Fishermans Bend Primary School (2026)

SITE IDENTIFIED

Sandridge future Primary School (timing TBC)

INVESTIGATION AREA

Lorimer - future Primary School (timing TBC)

Fishermans Bend INFRASTRUCTURE FUNDING

Fishermans Bend Development Contributions Plan

to support delivery of **\$2.7b** of **essential infrastructure**

Draft released 2023

120 projects

new or upgraded **parks, roads and streets**, and community **infrastructure**

Sets out **project priorities** and timing for **project delivery** over 3 ten year periods

\$58m Contributions collected to date (as at May 2025) by State

\$10m spent in 2018 on **Kirrip park** and streetscape works

IN DELIVERY... - Tranche 1 Priority infrastructure

\$16m Road Safety upgrades near schools

\$7m new **Park** (Johnson Street)

Strategic land **acquisitions** of future **open space** sites

OPEN SPACE

VISION: Open Space within **200m walking distance** for all residents and workers

0.3ha

Kirrip Park in Montague South (Ferrars Street)

DELIVERED

IN DELIVERY...

0.3ha new **park** in **Montague North** (Johnson Street)

0.12ha linear **open space** in **Wirraway** (Smith Street)

LAND ACQUIRED

2.52ha new **park** in **Sandridge** (North Port expansion)

LAND IDENTIFIED

35.47ha new **open space** in FB Framework (+ 16.8ha existing open space)



Advanced Manufacturing: The Fishermans Bend Opportunity

released 2021

- strategic directions for transformation of Employment Precinct



Water Sensitive City Strategy

released 2022

- integrated whole-of-water-cycle approach to water management



Seed Toolkit

released 2023

- Place activation and economic growth
- FB IDEAS Pilot project in operation



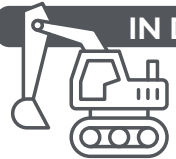
Montague Precinct Implementation Plan

Draft released 2023

- precinct character, place activation and key projects

CATALYST PROJECTS

IN DELIVERY...



Fishermans Bend Innovation Precinct

Government endorsed vision for 'a world renowned **centre of innovation in advanced manufacturing, engineering and design**'

IN DELIVERY

\$197.7m investment into **Stage 1** enabling works due for completion in 2026


IN DELIVERY

University of Melbourne – School of Engineering and Design (Stage 1 due for completion in 2026) – 10,000 students

DELIVERED

\$4.7m Gateway to **GMH pilot project**, the first step in Turner Street's transformation

DELIVERED



Ferrars Street Education and Community Precinct (2018)

LAND ACQUIRED

Fishermans Bend Water Recycling Plant

South East Water has acquired land (Sardine Street)

- South Melbourne Primary School
- Kirrip Park
- Streetscape upgrades
- Tram Stop upgrades
- Intersection upgrades