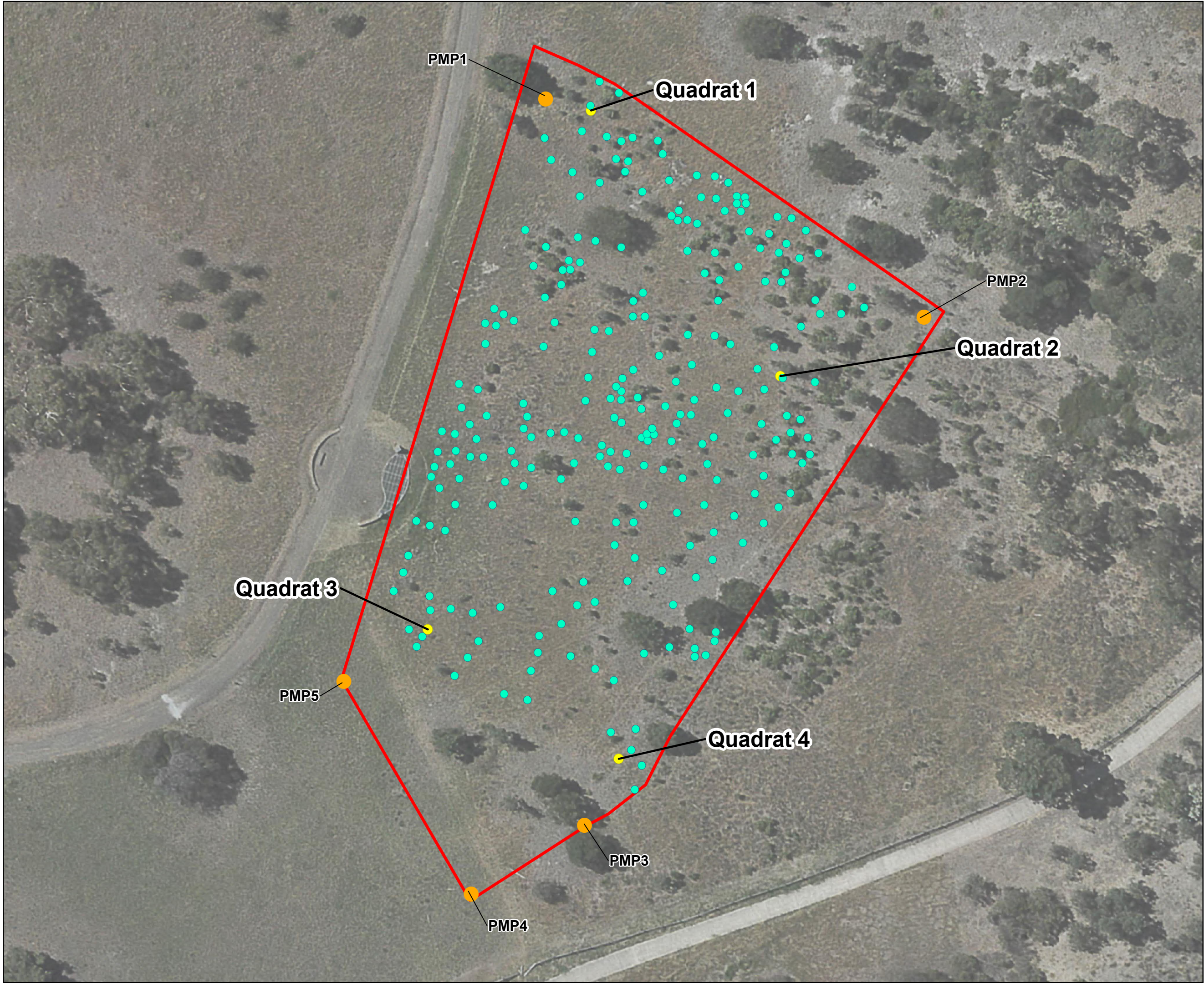


# Appendix A

## Figures



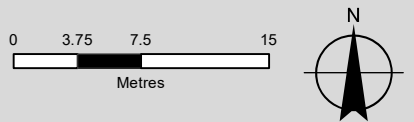


#### Legend

- MFL
- Monitoring Quadrat
- Photo Monitoring Points
- Recipient Site

#### Quarry Hills Park Recipient Site

Figure 1



Paper Size A3  
Map Projection: Transverse Mercator  
Horizontal Datum: GDA 1994  
Grid: GDA 1994 MGA Zone 55

Conditions of Use. This document may only be used by the client of the AECOM and GHD Joint Venture (JV) (and any other person who the JV has agreed can use this document) for the purpose for which it was prepared and must not be used by any other person or for any other purpose.

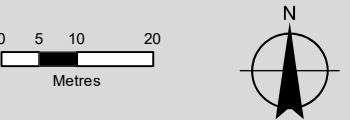




- Legend
- Monitoring Quadrat
  - Matted Flax-lily Cluster
  - Photo Monitoring Points
  - Recipient Site

Plenty Gorge Parklands  
Recipient Site

Figure 2



Paper Size A3  
Map Projection: Transverse Mercator  
Horizontal Datum: GDA 1994  
Grid: GDA 1994 MGA Zone 55

Conditions of Use. This document may only be used by the client of the AECOM and GHD Joint Venture (JV) (and any other person who the JV has agreed can use this document) for the purpose for which it was prepared and must not be used by any other person or for any other purpose.



# Appendix B

Raw field data sheets

MOH plants  
water stressed and matted

LOCK STUCK

Plenty Gorge Parklands: Population Total Count

Date:

Cluster ID	Plant ID	Live/Dead	Notes	Cluster ID	Plant ID	Live/Dead	Notes
1	001-003	L	tag	12	040-004	L	tag
1	001-004	L	tag	12	042-004	L	Water
1	002-003	L	tag	12	045-003	L	stressed tag
1	002-004	L	tag	12	045-004	L	tag
1	003-004	L	tag	12	048-004	L	tag
1	033-004	L	tag	13	025-003	L	tag
2	004-003	L	tag	13	026-004	L	Water
2	004-004	L		13	033-003	L	stressed
2	005-004	L		13	037-003	L	
2	006-003	L	tag	13	042-003	L	tag
2	006-004	L		13	071-003	L	
2	026-003	L		14	003-003	L	very very
3	007-003	L	tag	14	040-003	L	sparse and
3	007-004	L		14	041-003	L	Water stressed
3	008-003	L	tag	14	044-003	L	tag
3	008-004	L		14	055-003	L	
3	009-003	L	tag	14	055-004	L	
3	009-004	L	tag	15	005-003	L	sparse and
4	010-001	L	entire clute	15	024-003	L	water stressed
4	010-004	L	water stressed	15	028-004	L	tag
4	011-003	L	abundant plant	15	029-003	L	
4	011-004	D(?)	death out specific	15	029-004	L	tag
4	012-004	L	plants not known	16	025-004	L	tag
4	043-004	L		16	031-004	L	Water
5	012-003	L	All water	16	049-003	L	stressed
5	013-004	L	stressed	16	051-004	L	
5	014-003	L		16	050-003	L	
5	063-003	L		17	070-004	L	Water
5	073-004	L		17	060-003	L	stressed
5	080-003	L		17	064-003	L	but lots of
6	016-004	L	matted and	17	046-003	L	matted biomass
6	017-003	L	water stressed	17	050-004	L	
6	017-004	L		17	101-003	L	
6	018-003	L		18	046-004	L	lots of weeds
6	018-004	L		18	051-003	L	and lavender
6	048-003	L		18	052-004	L	
7	019-003	L	5 clumps	18	054-003	L	sparse shoots
7	020-003	D(?)	possibly 1 dead	18	058-003	L	
7	020-004	L	all water stressed	18	058-004	L	
7	021-003	L	* weed smothered	19	081-003	D	Dying off
7	021-004	L		19	081-004	L	upright & many
7	041-004	L		19	083-004	L	dead
8	013-003	L	Dense mat of	19	087-004	L	
8	015-004	L	plants	19	093-003	L	
8	022-003	L		19	102-003	D	
8	022-004	L	Not as water stressed as	20	057-003	L	Not many shoots
8	023-003	L	other clusters	20	057-004	L	extremely water
8	023-004	L		20	065-003	L	stressed lots of
9	015-003	L		20	065-004	L	die off
9	024-004	L	Overall pretty	20	066-003	L	tag
9	027-003	L	healthy cluster	20	066-004	L	tag
9	027-004	L		21	028-003	L	
9	044-004	L		21	031-003	L	
10	059-004	L	Getting smothered	21	032-003	L	
10	112-004	L		21	035-004	L	
10	061-003	L		21	037-004	L	
10	096-004	L		21	038-003	L	
10	043-003	L		22	053-003	L	
10	014-004	L		22	056-003	L	Good
11	047-003	L		22	062-003	L	mattings
11	049-004	L	Water	22	062-004	L	tag
11	052-003	L	stressed	22	104-004	L	
11	053-004	L		23	059-003	L	Water
11	103-003	L		23	060-004	L	stressed
11	114-004	L		23	061-004	L	tag
12	016-003	L		23	063-004	L	tag
12	019-004	L		23	064-004	L	

Cluster ID	Plant ID	Live/Dead	Notes	Cluster ID	Plant ID	Live/Dead	Notes
24	23 073-002	L	tag	35	097-003	L	tag
	24 084-003	L	Common	36	082-003	L	Healthy
	24 084-004	L	smothering tag	36	082-004	L	Healthy
	24 086-004	L	tag	36	083-003	L	Mat tag
	24 101-004	L		36	085-003	L	
25	24 102-004	L		36	115-003	L	
	24 104-003	L		36	115-004	L	
	25 076-001	L	Water soaked & tag	37	108-003	L	
	25 079-004	L	matted tag	37	109-003	L	
	25 085-004	L	tag	37	109-004	L	Matted but tag
26	25 089-004	L	tag	37	110-004	L	(low shoot)
	26 088-003	L		37	113-004	L	spore & tag
	26 088-004	L	small No tags	37	114-003	L	dying tag
	26 099-004	L	shoot)	38	067-003	L	tag
	26 100-003	L		38	069-003	L	tag
27	26 110-003	L		38	072-003	L	tag
	26 111-003	L		38	077-004	L	tag
	27 093-004	L		38	080-004	L	tag
	27 094-004	L	Healthy	38	103-004	L	
	27 095-003	L		39	067-004	L	shoots
28	27 095-004	L		39	068-003	L	spore
	27 106-003	L	tag	39	068-004	L	grass
	27 106-004	L		39	074-003	L	encroaching
	28 016-004	L	matted & tag	39	078-003	L	tag
	28 117-003	L	Water soaked tag	40	034-003	L	Water
29	28 117-004	L		40	034-004	L	spread tag
	28 118-003	L		40	035-003	L	tag
	28 122-004	L		40	036-004	L	tag
	28 123-004	L		40	038-004	L	
	29 121-004	L		41	030-003	L	Water
30	29 123-003	L	Matted	41	030-004	L	spread tag
	29 124-003	L		41	036-003	L	tag
	29 124-004	L		41	039-003	L	
	29 125-003	L	tag	41	054-004	L	
	29 125-004	L		41	056-004	L	
31	30 108-004	L		42	069-004	L	
	30 119-004	L		42	070-003	L	No stake
	30 120-003	L	Matted tag	42	074-004	L	tag
	30 120-004	L		42	075-003	L	tag
	30 121-003	L		42	075-004	L	
32	30 122-003	L		42	078-004	L	tag
	31 107-003	L		43	032-004	L	
	31 107-004	L		43	039-004	L	
	31 111-004	L	tag	43	047-004	L	Water spread tag
	31 112-002	L		43	071-004	L	tag
33	31 113-003	L		43	076-004	L	
	31 119-003	L		43	079-003	L	tag
	32 072-004	L	Blank berry tag				
	32 097-004	L	Matted				
	32 105-003	L					
34	32 105-004	L	tag				
	33 098-003	L	weed encroachment				
	33 098-004	L	plants sparse tag				
	33 099-003	L					
	33 100-004	L					
35	33 116-003	L					
	33 118-004	L					
	34 089-003	L	Matted tag				
	34 091-004	L					
	34 092-003	L					
	34 092-004	L					
	34 094-003	L					
	34 096-003	L					
	35 086-003	L	No stake				
	35 087-003	L					
	35 090-003	L	plants sparse				
	35 090-004	L					
	35 091-003	L					

smothered  
plants

# Quarry Hills Park: Population Total Count

Date:

Plant ID	Live/Dead	Notes	Plant ID	Live/Dead	Notes
001-001	L	no tag	029-002	L	
001-002	L		030-001	L	
002-001	L		030-002	L	
002-002	L		031-001	L	smothered
003-001	L		031-002	L	
003-002	L		032-001	L	
004-001	L		032-002	L	
004-002	L		033-001	L	
005-001	L		033-002	L	
005-002	L		034-001	L	
006-001	L		034-002	L	
006-002	L		035-001	L	
007-001	L	wrong location <sup>no tag</sup> on map	035-002	L	
007-002	L		036-001	L	
008-001	L		036-002	L	
008-002	L		037-001	L	
009-001	L		037-002	L	WS
009-002	L		038-001	L	
010-002	L		038-002	L	
010-003	L		039-001	L	
011-001	L	Marsh needs watering	039-002	L	
011-002	L		040-001	L	
012-001	L	dry gone to seed	040-002	L	
012-002	L		041-001	L	
013-001	L		041-002	L	
013-002	L	WS	042-001	L	
014-001	L		042-002	L	
014-002	L		043-001	L	
015-001	L		043-002	L	
015-002	L		044-001	L	
016-001	L		044-002	L	
016-002	L		045-001	L	no tag
017-001	L		045-002	L	
017-002	L		046-001	L	
018-001	L		046-002	D	
018-002	L	water stress / dry	047-001	L	
019-001	L		047-002	L	
019-002	L		048-001	L	
020-001	L		048-002	L	
020-002	L	WS	049-001	L	
021-001	L		049-002	L	
021-002	L		050-001	L	
022-001	L		050-002	L	
022-002	L	water stress (thatch smothered)	051-001	L	
023-001	D		051-002	L	
023-002	L		052-001	L	
024-001	L		052-002	L	
024-002	L		053-001	L	
025-001	L		053-002	L	
025-002	L		054-001	L	
026-001	L		054-002	L	
026-002	L		055-001	L	
027-001	L		055-002	L	
027-002	L		056-001	L	
028-001	L		056-002	L	
028-002	L		057-001	L	

RTU

RTA

Plant ID	Live/Dead	Notes	Plant ID	Live/Dead	Notes
057-002	L		087-002	L	
058-001	L		088-001	L	
058-002	L		088-002	L	
059-001	L		089-001	L	
059-002	L		089-002	L	
060-001	L		090-001	L	
060-002	L		090-002	L	
X 061-001	L	ws	091-001	L	
061-002	L		091-002	L	
062-001	L		092-001	L	
062-002	L	no tag	092-002	L	
063-001	L		093-001	L	
063-002	L		093-002	L	
→ 064-001	L		094-001	L	
064-002	L		094-002	L	
065-001	L		095-001	L	
065-002	L		095-002	L	
066-001	L		096-001	L	
066-002	L	smothered by K. Gress.	096-002	L	
067-001	L		097-001	L	
067-002	L		097-002	L	
068-001	L		098-001	L	
068-002	L		098-002	L	no tag
069-001	L	severe ws.	099-001	L	
069-002	L		099-002	L	
070-001	L		100-001	L	
070-002	L		100-002	L	
071-001	L		101-001	D	Check for burrowing dead.
071-002	L		101-002	L	ws notag
072-002	L	smothered	102-001	L	
073-001	L		102-002	L	
073-003	L		103-001	L	
074-001	L		103-002	L	
074-002	L		104-001	L	
075-001	L		104-002	L	
075-002	L		105-001	L	
076-002	L		105-002	L	
076-003	L		106-001	L	
077-001	L		106-002	L	
077-002	L		107-001	L	
078-001	L		107-002	L	
078-002	L		108-001	L	
079-001	L		108-002	L	no tag
079-002	L		109-001	L	
080-001	L		109-002	L	
080-002	L		110-001	L	
081-001	L		110-002	L	under tree.
081-002	L		111-001	L	
082-001	L		111-002	L	
082-002	L		112-001	L	
083-001	L	major weed encroachment	112-003	L	
083-002	L		113-001	L	
084-001	L		113-002	L	
084-002	L		114-001	L	
085-001	L		114-002	L	
085-002	L		115-001	L	
086-001	L		115-002	L	
086-002	L		116-001	L	
087-001	L		116-002	L	



Quarry Hills Park: Population Total Count					
Date:					
Plant ID	Live/Dead	Notes	Plant ID	Live/Dead	Notes
117-001	L		118002	L	
117-002	L				
118-001	L				
119-001	L				
119-002	L				
120-001	L				
120-002	L				
121-001	L				
122-001	L				
122-002	L				
123-001	L				
123-002	L				
124-001	L	no tag.			
124-002	L	no tag.			
125-001	L				
125-002	L				



Measuring what is separate  $\rightarrow$  amalgamating  
what can't be distinguished

## Plenty Gorge Parklands: Quadrat Monitoring

<b>Date:</b>		<b>Surveyors:</b>	
--------------	--	-------------------	--

1 = 0 - 5	2 = >5 - 10	3 = 10+
-----------	-------------	---------

### Quadrat 1 (Cluster 1)

[illegible]

### Quadrat 2 (Cluster 9)

[illegible]



[illegible]

#### Quadrat 4 (Cluster 21)

[illegible]



Quarry Hills Park: Quadrat Monitoring

Date: Surveyors:

1 = 0 - 5 2 = >5 - 10 3 = 10+

Quadrat 1

Plant ID	Cover-abundance	Plant basal diameter (mm)	Max Leaf Length (mm) - height	No. leaves/shoot (1 - 3)	Inflorescence/infructescence				Evidence of...			Other Comments
					Flowering? (Y/N)	Height (mm)	Flowering (1 - 3)	Fruiting (1-3)	Herbivory (Y/N)	Water Stress (Y/N)	Weed encroachment/competition (Y/N)	
012-001	60%	90cm	40cm	3	N	45cm	1	1	N	Y	Y	
018-002	<5%	50cm	30cm	3	N	40cm	1	1	N	Y	Y	already lost weed
022-002	5%	60cm	30cm	3	N	40cm	1	1	N	Y	Y	onion grass + grass, already gone to seed

Quadrat 2

Plant ID	Cover-abundance	Plant basal diameter (mm)	Max Leaf Length (mm) - height	No. leaves/shoot (1 - 3)	Inflorescence/infructescence				Evidence of...			Other Comments
					Flowering? (Y/N)	Height (mm)	Flowering (1 - 3)	Fruiting (1-3)	Herbivory (Y/N)	Water Stress (Y/N)	Weed encroachment/competition (Y/N)	
028-002	50%	80cm	30cm	3	N	40cm	1	3	N	Y	Y	
096-002	40%	100cm	30cm	3	N	60cm	1	3	N	Y	Y	
105-001	40%	90cm	30cm	3	N	55cm	1	2	N	Y	Y	

Quadrat 3

					Inflorescence/infructescence				Evidence of...			
--	--	--	--	--	------------------------------	--	--	--	----------------	--	--	--



Plant ID	Cover-abundance	Plant basal diameter (mm)	Max Leaf Length (mm) - height	No. leaves/shoot (1 - 3)	Flowering? (Y/N)	Height (mm)	Flowering (1 - 3)	Fruiting (1-3)	Herbivory (Y/N)	Water Stress (Y/N)	Weed encroachment/competition (Y/N)	Other Comments
029-002	20%	70cm	40cm	3	N	50cm	1	2	N	Y	Y	
033-002	30%	80cm	40cm	3	N	45cm	1	2	N	Y	Y	
106-001	75%	1.5m	50cm	2	Y	70cm	2	1	N	N	Y	
095-002	10%	70cm	30cm	3	N	30cm	1	2	N	Y	Y	

#### Quadrat 4

Plant ID	Cover-abundance	Plant basal diameter (mm)	Max Leaf Length (mm) - height	No. leaves/shoot (1 - 3)	Inflorescence/infructescence				Evidence of...			Other Comments
					Flowering? (Y/N)	Height (mm)	Flowering (1 - 3)	Fruiting (1-3)	Herbivory (Y/N)	Water Stress (Y/N)	Weed encroachment/competition (Y/N)	
039-001	5%	70cm	40cm	2	N	40cm	1	1	N	Y	Y	
039-002	5%	55cm	40cm	1	N	40cm	1	1	N	Y	Y	has fruited
057-001	5%	15cm	10cm	1	N	10cm	1	1	N	Y	Y	has fruited + diaq

NT = No tag

Plenty Gorge Parklands: Population Total Count

Date: 30/7/14

Cluster ID	Plant ID	Live/Dead	Notes	Cluster ID	Plant ID	Live/Dead	Notes
1	001-003	L		12	040-004	L	
1	001-004	L	NT	12	042-004	L	NT
1	002-003	L	NT	12	045-003	L	NT
1	002-004	L		12	045-004	L	
1	003-004	L		12	048-004	L	
1	033-004	L		13	025-003	L	
2	004-003	L		13	026-004	L	
2	004-004	L	NT	13	033-003	L	NT
2	005-004	L	NT	13	037-003	L	NT
2	006-003	L		13	042-003	L	
2	006-004	L		13	071-003	L	NT
2	026-003	L	NT	14	003-003	L	
3	007-003	L		14	040-003	L	
3	007-004	L		14	041-003	L	NT
3	008-003	L		14	044-003	L	NT
3	008-004	L	NT	14	055-003	L	NT
3	009-003	L	NT	14	055-004	L	NT
3	009-004	L	NT	15	005-003	L	
4	010-001	L	NT	15	024-003	L	
4	010-004	L		15	028-004	L	
4	011-003	L		15	029-003	L	
4	011-004	L		15	029-004	L	
4	012-004	L		16	025-004	L	
4	043-004	L	NT	16	031-004	L	NT
5	012-003	L		16	049-003	L	
5	013-004	L	Blackberry	16	051-004	L	NT
5	014-003	L		16	050-003	L	NT
5	063-003	L		17	070-004	L	NT
5	073-004	L	NT	17	060-003	L	
5	080-003	L		17	064-003	L	
6	016-004	L	NT	17	046-003	L	
6	017-003	L		17	050-004	L	NT
6	017-004	L	NT	17	101-003	L	NT
6	018-003	L		18	046-004	L	
6	018-004	L	NT	18	051-003	L	NT
6	048-003	L		18	052-004	L	NT
7	019-003	L		18	054-003	L	NT
7	020-003	L	NT	18	058-003	L	NT
7	020-004	L	NT	18	058-004	L	NT
7	021-003	L		19	081-003	L	
7	021-004	L		19	081-004	L	NT
7	041-004	L		19	083-004	L	
8	013-003	L		19	087-004	L	NT
8	015-004	L	NT	19	093-003	L	NT
8	022-003	L		19	102-003	L	
8	022-004	L	NT	20	057-003	L	
8	023-003	L		20	057-004	L	
8	023-004	L	NT	20	065-003	L	NT
9	015-003	L		20	065-004	L	
9	024-004	L	NT	20	066-003	L	
9	027-003	L	NT	20	066-004	L	
9	027-004	L	NT	21	028-003	L	NT
9	044-004	L		21	031-003	L	
10	059-004	L	Cookateas	21	032-003	L	
10	112-004	L	NT	21	035-004	L	NT
10	061-003	L		21	037-004	L	NT
10	096-004	L	NT	21	038-003	L	NT
10	043-003	L		22	053-003	L	
10	014-004	L	NT	22	056-003	L	
11	047-003	L	NT	22	062-003	L	
11	049-004	L	Stake down	22	062-004	L	NT
11	052-003	L		22	104-004	L	NT
11	053-004	L		23	059-003	L	NT
11	103-003	L	NT	23	060-004	L	
11	114-004	L	NT	23	061-004	L	
12	016-003	L		23	063-004	L	NT
12	019-004	L	NT	23	064-004	L	

12

13

14

15

16

17

18

19

20

21

22

23

Gernium  
Stake down

Eucys

Stake down

Cluster ID	Plant ID	Live/Dead	Notes	Cluster ID	Plant ID	Live/Dead	Notes
23	073-002	L		35	097-003	L	
24	084-003	L		36	082-003	L	



24	084-004	L		36	082-004	L	NT
24	086-004	L	NT	36	083-003	L	NT
24	101-004	L		36	085-003	L	
24	102-004	L	NT	36	115-003	L	NT
24	104-003	L		36	115-004	L	NT
25	076-001	L		37	108-003	L	NT
25	079-004	L	NT	37	109-003	L	NT
25	085-004	L		37	109-004	L	NT
25	089-004	L		37	110-004	L	NT
26	088-003	L	NT	37	113-004	L	
26	088-004	L	NT	37	114-003	L	
26	099-004	L	NT	38	067-003	L	NT
26	100-003	L	NT	38	069-003	L	NT
26	110-003	L	NT	38	072-003	L	NT
26	111-003	L		38	077-004	L	NT
27	093-004	L	NT	38	080-004	L	
27	094-004	L	NT	38	103-004	L	NT
27	095-003	L	NT	39	067-004	L	NT
27	095-004	L	NT	39	068-003	L	NT
27	106-003	L		39	068-004	L	
27	106-004	L	NT	39	074-003	L	
28	016-004	L		39	078-003	L	
28	117-003	L		40	034-003	L	
28	117-004	L		40	034-004	L	NT
28	118-003	L	NT	40	035-003	L	NT
28	122-004	L	NT	40	036-004	L	
28	123-004	L		40	038-004	L	NT
29	121-004	L		41	030-003	L	NT
29	123-003	L	NT	41	030-004	L	
29	124-003	L	NT	41	036-003	L	NT
29	124-004	L	NT	41	039-003	L	NT
29	125-003	L		41	054-004	L	NT
29	125-004	L	NT	41	056-004	L	NT
30	108-004	L	NT	42	069-004	L	NT
30	119-004	L	NT	42	070-003	L	NT
30	120-003	L	NT	42	074-004	L	NT
30	120-004	L		42	075-003	L	
30	121-003	L		42	075-004	L	NT
30	122-003	L	NT	42	078-004	L	
31	107-003	L	NT	43	032-004	L	NT
31	107-004	L	NT	43	039-004	L	NT
31	111-004	L		43	047-004	L	
31	112-002	L		43	071-004	L	NT
31	113-003	L		43	076-004	L	
31	119-003	L		43	079-003	L	
32	072-004	L					
32	097-004	L	NT				
32	105-003	L	NT				
32	105-004	L	NT				
33	098-003	L	NT				
33	098-004	L					
33	099-003	L	NT				
33	100-004	L	NT				
33	116-003	L	NT				
33	118-004	L	NT				
34	089-003	L					
34	091-004	L	NT				
34	092-003	L	NT				
34	092-004	L	NT				
34	094-003	L	NT				
34	096-003	L	NT				
35	086-003	L					
35	087-003	L					
35	090-003	L					
35	090-004	L					
35	091-003	L					

No  
tags  
for all JS

36

37

38

39

40

41

42

43

Stake  
down

Stake  
down

No  
Stake

High  
biomass

No  
Stake

Quarry Hills Park: Population Total Count

Date: 30/7/24

Plant ID	Live/Dead	Notes	Plant ID	Live/Dead	Notes
001-001	L		029-002	L	
001-002	L	not tag found	030-001	L	
002-001	L		030-002	L	
002-002	L	FUNGIUS	031-001	L	
003-001	L		031-002	L	
003-002	L		032-001	L	
004-001	L	not tag found thorned	032-002	L	
004-002	L		033-001	AD	can't find (lots of grass)
005-001	L		033-002	L	
005-002	L		034-001	L	
006-001	L		034-002	L	
006-002	L	Juncus + juv. <del>blackberry</del>	035-001	L	
007-001	D	not found no stake	035-002	L	high grass cover
007-002	L	grass clumps no tag	036-001	L	
008-001	L		036-002	L	
008-002	L		037-001	L	
009-001	L		037-002	L	
009-002	L		038-001	L	
010-002	L	ERC seedlings	038-002	L	
010-003	L		039-001	L	
011-001	L		039-002	L	
011-002	L		040-001	L	
012-001	L		040-002	L	
012-002	L		041-001	L	
013-001	L	blackberry!	041-002	L	
013-002	L	no tag	042-001	L	
014-001	L		042-002	L	
014-002	L		043-001	L	
015-001	L		043-002	L	
015-002	L		044-001	L	
016-001	L		044-002	L	
016-002	L		045-001	L	
017-001	L		045-002	L	
017-002	L		046-001	L	
018-001	L		046-002	L	1 small indiv.
018-002	L		047-001	L	not tag smothered
019-001	L		047-002	L	small
019-002	L		048-001	L	
020-001	L		048-002	L	
020-002	L		049-001	L	
021-001	L		049-002	L	
021-002	L		050-001	L	
022-001	L		050-002	L	
022-002	L		051-001	L	
023-001	L		051-002	L	
023-002	L		052-001	L	
024-001	L		052-002	L	
024-002	L		053-001	L	
025-001	L		053-002	L	
025-002	L		054-001	L	
026-001	L		054-002	L	
026-002	L		055-001	L	
027-001	L		055-002	L	
027-002	L		056-001	L	
028-001	L		056-002	L	
028-002	L	dead tree smothered but ok	057-001	L	

cats ear  
plantago  
grass

grass  
no stake

1 small indiv.  
not tag smothered

small

Plant ID	Live/Dead	Notes	Plant ID	Live/Dead	Notes
057-002	L		087-002	L	
058-001	L		088-001	L	
058-002	L		088-002	L	
059-001	L		089-001	L	
059-002	L		089-002	L	
060-001	L		090-001	L	
060-002	L		090-002	L	
061-001	L		091-001	L	
061-002	L		091-002	L	
062-001	L		092-001	L	
062-002	L		092-002	L	
063-001	L		093-001	L	
063-002	L		093-002	L	
064-001	L		094-001	L	
064-002	L	no tag dirt clump	094-002	L	
065-001	L		095-001	L	

001-002  
103-002  
114-002  
004-001  
081-002 } extra  
stake  
in vicinity

036-001



065-002	L		095-002	L	
066-001	L		096-001	L	
066-002	L	vs small smother theme	096-002	L	
067-001	L		097-001	L	
067-002	L		097-002	L	
068-001	L		098-001	L	
068-002	L		098-002	L	
069-001	L		099-001	L	
069-002	L		099-002	L	
070-001	L		100-001	L	
070-002	L		100-002	L	
071-001	L		101-001	L	Check for burrowing none
071-002	L		101-002	L	weeds!
072-002	L	no tag	102-001	L	
073-001	L		102-002	L	
073-003	L		103-001	L	
074-001	L		103-002	L	
074-002	L		104-001	L	
075-001	L	no tag	104-002	L	
075-002	L		105-001	L	
076-002	L		105-002	L	
076-003	L		106-001	L	
077-001	L		106-002	L	so big!
077-002	L		107-001	L	
078-001	L		107-002	L	
078-002	L		108-001	L	
079-001	L		108-002	L	no tag
079-002	L		109-001	L	
080-001	L		109-002	L	
080-002	L		110-001	L	
081-001	L		110-002	L	
081-002	L	no tag	111-001	L	
082-001	L	small + smothered	111-002	L	
082-002	L		112-001	L	
083-001	L		112-003	L	juv enc
083-002	L	lemnandra adjacent	113-001	L	
084-001	L		113-002	L	
084-002	L		114-001	L	
085-001	L		114-002	L	no tag found
085-002	L		115-001	L	
086-001	L		115-002	L	
086-002	L		116-001	L	
087-001	L		116-002	L	

#### Quarry Hills Park: Population Total Count

Date:

Plant ID	Live/Dead	Notes	Plant ID	Live/Dead	Notes
117-001	L	smothered poa	118-002	L	
117-002	L				
118-001					
119-001	L				
119-002	L				
120-001	L				
120-002	L				
121-001	L				
122-001	L	so much grass			
122-002	L				
123-001	L				
123-002	L				
124-001	L				
124-002	L	cat's ear.			
125-001	L				
125-002	L				