

Victorian trends from the Australian Early Development Census | Results from 2009 to 2024

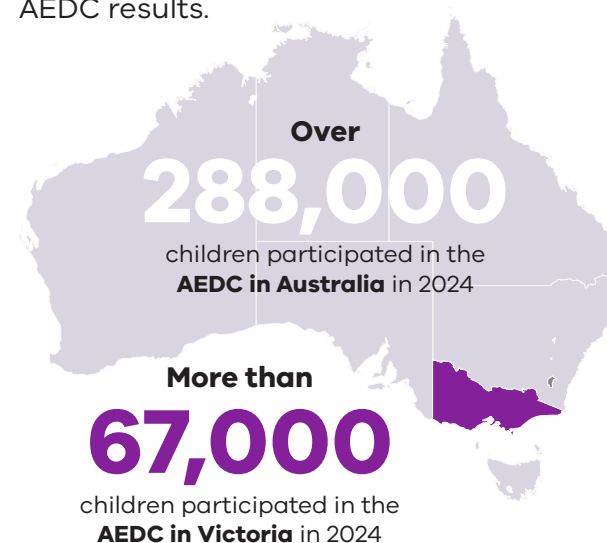
The AEDC measures children's development across five domains as they begin their first year of full-time school and has been held every three years since 2009. The sixth collection was in 2024.

The AEDC data shows us how well children are faring and monitors developmental vulnerability over time.

Nationally, the 2024 results show that the proportion of children who are considered developmentally vulnerable on one or more domains has increased since 2021.

Results in Victoria reflect this pattern of increasing developmental vulnerability over time, however rates of vulnerability in Victoria continue to be lower than the national level.

Further research is needed to understand what is contributing to changes in the AEDC results.



Find out more

For further information contact the Victorian AEDC Coordinator at aedc@education.vic.gov.au

or visit

<https://www.vic.gov.au/australian-early-development-census-victoria>

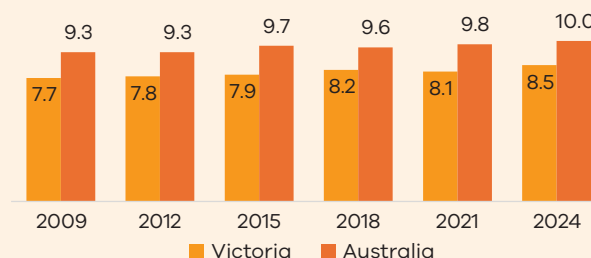
AEDC Domains

Lower levels of vulnerability in Victoria indicate that our children are faring better compared to the national result ✓



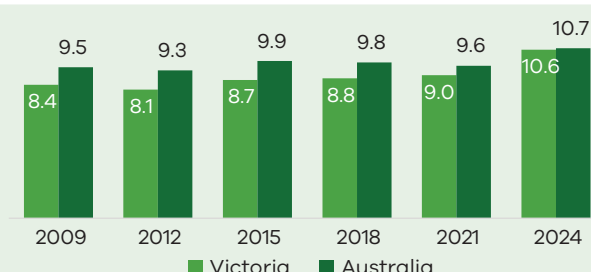
Physical health and wellbeing

Developmental vulnerability on the physical health and wellbeing domain **increased** between 2009 and 2024. Since 2021, vulnerability increased by 0.4 percentage points.



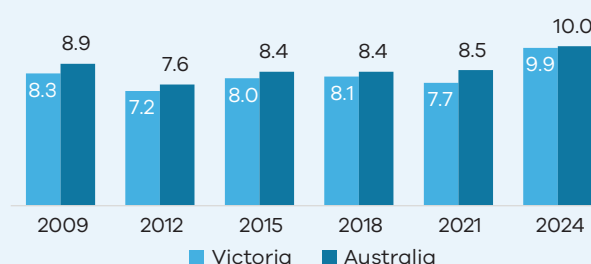
Social competence

Developmental vulnerability in the social competence domain **increased** between 2009 and 2024. Between 2021 and 2024, vulnerability increased by 1.6 percentage points.



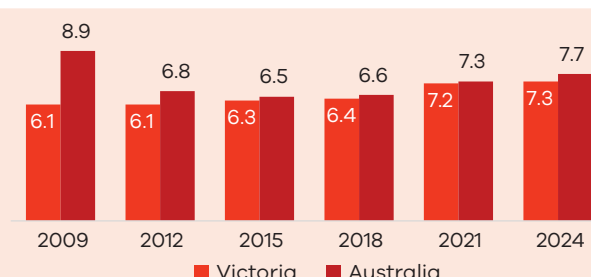
Emotional maturity

Developmental vulnerability in emotional maturity fluctuated between 2009 and 2024. There was a significant increase in vulnerability since 2021, with an increase of 2.1 percentage points.



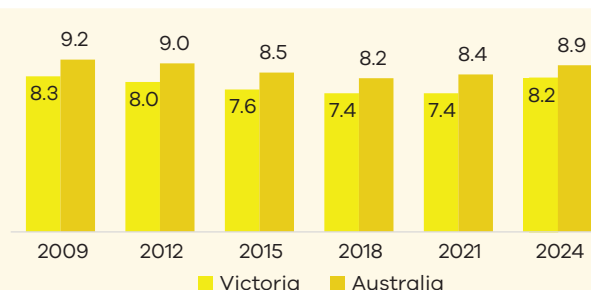
Language and cognitive skills (school-based)

Overall, developmental vulnerability in language and cognitive skills (school-based) **increased** between 2009 and 2024. There has not been significant change since 2021.



Communication skills and general knowledge

Overall, developmental vulnerability in communication skills and general knowledge remained steady between 2009 and 2024. Between 2021 and 2024 vulnerability in this domain increased by 0.8 percentage points.

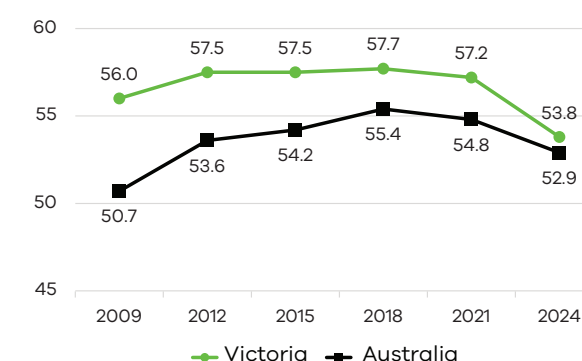


Since 2002, the Australian Government has worked in partnership with eminent child health research institutes, the Centre for Community Child Health at The Royal Children's Hospital and the Murdoch Children's Research Institute, and The Kids Research Institute Australia to deliver the Australian Early Development Census program to communities nationwide. The Australian Government continues to work with its partners, and with state and territory governments to implement the AEDC. This flyer uses data from the Australian Early Development Census (AEDC).

The AEDC is funded by the Australian Government Department of Education. The findings and/or views reported are those of the author and should not be attributed to the Australian Government Department of Education or the Australian Government.

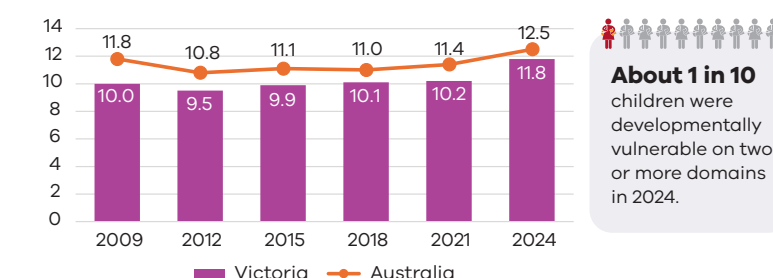
The proportion of children developmentally on track in all five domains

In Victoria, although there was a decline between the 2021 and 2024 collections, a larger proportion of Victorian children are developmentally on track in all five domains than nationally.



Vulnerability on two or more domains

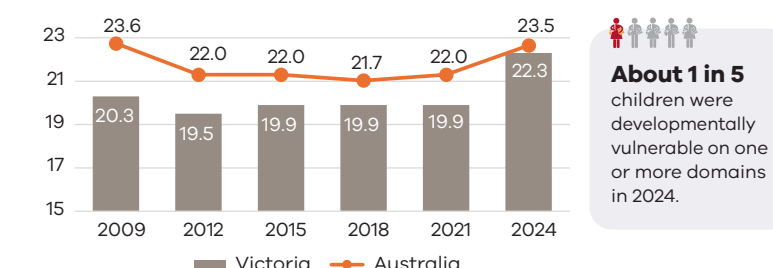
Children in Victoria had lower developmental vulnerability on two or more domains compared to the rest of Australia.



About 1 in 10 children were developmentally vulnerable on two or more domains in 2024.

Vulnerability on one or more domains

Children in Victoria had lower developmental vulnerability on one or more domains compared to the rest of Australia.



About 1 in 5 children were developmentally vulnerable on one or more domains in 2024.