

Main Road Level Crossing Removal Project, St Albans

Annual Compliance Report
2024-2025
EPBC Approval No. 2014/7203

Prepared for
Audit and Assurance Section
Compliance and Enforcement Branch
Environment Assessment and Compliance Division
Department of Climate Change, Energy, the Environment and Water
GPO Box 787, CANBERRA ACT 2601



Contents

TERMS, ABBREVIATIONS AND DEFINITIONS	3
1 EXECUTIVE SUMMARY	4
2 INTRODUCTION	4
2.1 Purpose of this Report	4
2.2 Project Background	4
2.3 EPBC Act Requirements	4
3 PROJECT STATUS	5
3.1 Construction	5
3.2 Management Plans	5
3.3 Current requirements	5
4 PERFORMANCE AND COMPLIANCE (EPBC 2014/7203)	6
Table 2 EPBC Act Approval Notice 2014/7203 compliance results: 2024 – 2025.	6
APPENDIX A – MAP OF PROJECT AREA	18
APPENDIX B – LOCATION OF CONSTRUCTION ACTIVITIES AND THREATENED SPECIES AND COMMUNITIES	19
APPENDIX C – LOCATION OF NO GO ZONES	23
APPENDIX D – LOCATION OF TEMPORARY STORAGE LOCATIONS	26



DOCUMENT INFORMATION

EPBC Approval number: 2014/7203

Approval holder: Department of Transport and Planning (ABN 69 981 208 782)

Approved action: Main Road Level Crossing Removal Project, St Albans, Victoria (EPBC 2014/7203).

Document title: Annual Compliance Report 2024 - 2025 EPBC Approval No. 2014/7203

Version No. 1.0

Declaration of accuracy

In making this declaration, I am aware that sections 490 and 491 of the Environment Protection and Biodiversity Conservation Act 1999 (Cth) (EPBC Act) make it an offence in certain circumstances to knowingly provide false or misleading information or documents. The offence is punishable on conviction by imprisonment or a fine, or both. I declare that all the information and documentation supporting this compliance report is true and correct in every particular. I am authorised to bind the approval holder to this declaration and that I have no knowledge of that authorisation being revoked at the time of making this declaration.

Signed 

Jennifer Howard

Executive Director Inner Metro Region

Department of Transport and Planning (ABN 69 981 208 782)

Date 15/12/ 2025

TERMS, ABBREVIATIONS AND DEFINITIONS

The terms, abbreviations and definitions that have been used in this document are listed in the below table.

Table 1 List of Terms and Abbreviations

Terms / Abbreviation	Definition
Approval Holder	Department of Transport and Planning, formerly VicRoads. ABN 61 760 960 480
Biosite	Biosite 3546, adjacent to the project area
BSR	Biosite 3546 Survey Reports
CEMP	Construction Environmental Management Plan
CMP	Conservation Management and Button Wrinklewort Recovery Plan
DCCEEW	Department of Climate Change, Energy, the Environment and Water (formerly the Department of Environment, DoE)
DEECA	Department of Energy, Environment and Climate Action (formerly Department of Sustainability and Environment, DSE)
DTP	Department of Transport and Planning (formerly VicRoads)
DTP website for the Main Road Level Crossing Removal Project, St Albans	https://www.vic.gov.au/epbc-commitments#main-road-st-albans-level-crossing-removal-project
EPBC Act	Environmental Protection and Biodiversity Conservation Act 1999
EPA	Environmental Protection Authority
ha	Hectare
NTGVVP	Natural Temperate Grassland of the Victorian Volcanic Plain
SRF	Spiny Rice-flower



1 EXECUTIVE SUMMARY

EPBC Act Approval No. 2014/7203 was issued to VicRoads on 5 November 2014 for the construction of the Main Road Level Crossing Removal Project in St Albans, Victoria. The Project is located 16 km north-west of the Melbourne Central Business District, Victoria.

VicRoads, who is the original project approval holder, is now part of the Department of Transport and Planning (DTP). This report recognises the DTP as the approval holder and authority for the project.

This compliance report addresses the status of the Level Crossing Removal project against the approval conditions for the period between 9 October 2024 to 31 December 2025. This report finds compliance with all approval conditions for this period.

Condition 1A of the approval requires that the construction activities do not impact on more than five Spiny Rice-flower individuals, no Button Wrinklewort individuals, or 1.5ha of the Natural Temperate Grassland of the Victorian Volcanic Plain (NTGVVP) within the Biosite area. Following the result of repeat surveys conducted in 2024, and consultation with the Department, DTP engaged a suitably qualified ecological expert to undertake an independent audit of the management of the Biosite. This independent audit concluded that it was unlikely that construction activities led to the decline of any Spiny rice-flower individual, Button Wrinklewort individuals, or Natural Temperate Grassland area.

2 INTRODUCTION

2.1 Purpose of this Report

This report details compliance with the conditions of Approval No. 2014/7203 under the EPBC Act, in accordance with Condition No. 11 of the decision notice. This Compliance report covers the reporting period from 9 October 2024 – 31 December 2025.

2.2 Project Background

The Main Road level crossing is located at the centre of the St Albans Major Activity area in the City of Brimbank, approximately 16 km north-west of the Melbourne Central Business District. It forms the intersection of the Sunbury and Bendigo railway lines with Main Road, which is an east west arterial road link.

This project removed the level crossing by lowering the railway line under Main Road. The location of the level crossing removal works occurred within the rail reserve along the existing Sunbury train line between Merton Street and Henry Street in St Albans. The works occurred along approximately 1.9km, covering an area of approximately 5ha.

The Main Road Level crossing removal created a more efficient transport network, improved access to services in the local area, and improved safety for all modes of transport in the vicinity of the crossing.

The locality map can be found in Appendix A of this report.


2.3 EPBC Act Requirements

The EPBC Act has several objectives, including the protection of Matters of National Environmental Significance, such as nationally threatened species and ecological communities and heritage places.

A decision issued on 11 June 2014 determined that the Main Road Level Crossing Removal Project, St Albans proposed action was a 'controlled action' requiring assessment and approval under the EPBC Act. The relevant controlling provisions were:

Listed threatened species and communities (sections 18 and 18A):

- The listed threatened species and communities present at Biosite 3546
- Spiny Rice-flower (*Pimelea spinescens* subsp. *spinescens*)
- Button Wrinklewort (*Rutidosis leptorhynchoides*)
- Natural Temperate Grassland of the Victorian Volcanic Plain



The project was approved by the Department of Climate Change, Energy, the Environment and Water (DCCEEW) (the Department), previously the Department of Environment, as a controlled action, with conditions, on 5 November 2014.

On 16 June 2024, the Department issued a notification of extension to the approval period, extending the approval until 31 December 2025. The Department subsequently issued a decision to vary conditions of approval on 23 August 2024.

A copy of the EPBC Approval Notice and variations can be found on the DCCEEW website [Referral summary · EPBC Act Public Portal \(awe.gov.au\)](#).

3 PROJECT STATUS

3.1 Construction

Construction of the St Albans Level Crossing Removal project commenced on 9 October 2015, and was completed in November 2016.

3.2 Management Plans

As a condition of the approval, DTP created a Conservation Management and Button Wrinklewort Recovery Plan (CMP) that ensures the environmental values of a Conservation Reserve known as “Biosite 3546” adjacent to the project site are managed for a period of at least 10 years. The CMP was provided to the Department on 15 November 2015, and requires that for every year for five years after the commencement of construction activities, surveys for listed threatened species and ecological communities are to be undertaken by a suitably qualified expert, and the monitoring surveys to be supplied to the Minister within 10 days of completion of the monitoring surveys.

3.3 Current requirements

Implementation of the Conservation Management and Button Wrinklewort Recovery Plan

The CMP must be implemented at Biosite 3546 for no less than ten years. The CMP identified weeds, rubbish, biomass build up and anthropogenic activities as the four highest priority threats to be controlled to conserve the Biosite’s environmental values. The CMP specifies targeted management actions to achieve these goals, relating to a) weed and pest control, b) rubbish removal, c) biomass control via planned burns, d) fencing and signage, e) revegetation and f) plant health monitoring.

The CMP also specifies that for every year for five years after the commencement of the construction activities, surveys for threatened species and communities are undertaken and provided to the Minister. The Management of the Biosite in accordance with the CMP must occur until 31 December 2025.

Annual reporting for the life of the approval (effective until 31 December 2025).

Within three months of 9 October each year following the commencement of construction activities, the person taking the action must publish a report on their website addressing compliance with each of the conditions of this approval, including implementation of any management plans/programs as specified in the conditions. Documentary evidence providing proof of the date of publication must be provided to the department at the same time as the compliance report is published. Non-compliance with any of the conditions of the approval must also be reported to the department within 2 business days of becoming aware of the non-compliance.



4 PERFORMANCE AND COMPLIANCE (EPBC 2014/7203)

Table 2 EPBC Act Approval Notice 2014/7203 compliance results: 2024 - 2025.

(* denotes a varied condition, dated 23 August 2024).

Condition Number/ reference	Condition	Is the project compliant with this condition?	Evidence/Comments
1.	Construction activities must not occur outside the project area and must be limited to existing disturbed areas.	Compliant	<p>There have been no construction activities on site during the reporting period.</p> <p>All construction activities were completed between October 2015 and November 2016. During the construction period, all construction activities were limited to existing disturbed areas within the project area.</p>
1A*.	<p>The approval holder must ensure that construction activities do not result in any of the following impacts to listed threatened species and communities at Biosite 3546:</p> <ul style="list-style-type: none"> a. the loss of more than 5 Spiny Rice-flower individuals. b. the loss of any Button Wrinklewort individuals. c. the loss of more than 1.5 hectares of Natural Temperate Grassland of the Victorian Volcanic Plain. 	Compliant	<p>The 2024 survey reports, completed in accordance with varied condition 4, found a deficit in the numbers of Spiny Rice-flower individuals, and in the total area of the NTGVVP, in comparison to the pre-construction numbers.</p> <p>As a result of the 2024 survey results, DTP engaged a suitably qualified environmental consultant in 2025 to undertake an independent audit and give confidence to compliance with condition 1A.</p> <p>DTP engaged Biosis Pty Ltd to undertake an independent audit of compliance with the Conservation Management and Button Wrinklewort Recovery Plan (CMP), undertake a targeted survey the Spiny Rice-flower population and clarify the extent of the Natural Temperate Grassland. The targeted survey of the Spiny Rice-flower population was undertaken by Biosis in August 2025 in accordance with the EPBC Act policy statement 3.11 "Significant impact guidelines for the critically endangered Spiny Rice-flower" (DEWHA 2009).</p>



			<p>The targeted survey recorded a total of 484 individual plants, a decrease of 52 plants when compared to the original surveys in 2014. However, the 2025 surveys found 148 more individuals than the 2024 surveys completed by Nature Advisory. Biosis concluded that the discrepancy between the 2014 and the 2025 surveys are not likely due to construction activities. Biosis concludes that the discrepancy may be attributed to two reasons:</p> <p>“We believe the discrepancy may be attributed to two reasons. Firstly, the detectability of Spiny Rice-flower plants can be very low, surveys six months following a low intensity ecological burn (DEWHA 2009) to remove biomass may improve detectability, providing that Spiny Rice-flower plants are not burnt. Generally this only applies to small sections within each management zone, and which typically did not have many Spiny Rice-flower records. This however, may account for small proportion of the discrepancy. Secondly, the survey methodology, particularly when counting the number of individual plants, will vary between ecologists. It is important to define what constitutes an individual Spiny Rice-flower plant prior to conducting surveys.” (Biosis, 2025).</p> <p>Biosis identified a total of 0.91 hectares of the Natural Temperate Grassland, a deficit of 0.07 hectares compared to the survey conducted in 2014. Biosis concluded that construction activities are unlikely to have contributed to the deficit in extent of the Natural Temperate Grassland and concluded that the result may be due to updates in the resolution of pre-construction mapping, or seasonal variations in the natural boundaries of grassland systems.</p> <p>Biosis found “land management actions which have been carried out at Biosite 3546 are largely compliant with the CMP, and compliance has been improving over the duration of its implementation. Practical Ecology conducted weed control and litter removal upon project initiation in Year 1 (2015/2016) (Practical Ecology 2016a).</p>
--	--	--	--



			<p>Regular weed control, rubbish removal and ecological burns (or equivalent biomass reduction actions) occurred in all subsequent years, and were conducted by either Practical Ecology, AusEco Solutions or MCMC (AusEco Solutions 2019, Practical Ecology 2016a, Merri Creek Management Committee 2025). Therefore, all management tasks from the CMP relating to weed and pest control, rubbish removal, biomass and fencing/signage are compliant” (Biosis 2025).</p> <p>Biosis also found that “The quality of the vegetation when considering the low weed covers observed, inter-tussock space (low biomass) and the diversity of understorey native flora suggest that the current on-ground management has been very successful. The consistent weed control efforts and ecological burning by MCMC are clearly benefiting the habitat,” (Biosis 2025).</p>
2*.	To protect and enhance the listed threatened species and communities present at Biosite 3546, including but not limited to the Spiny Rice-flower and the Button Wrinklewort, the approval holder must, unless otherwise agreed to in writing by the Minister, provide to the Minister for approval, within 12 months of the date of this approval, a Conservation Management Plan that ensures the environmental values of Biosite 3546 and the listed threatened species and communities within Biosite 3546 are managed until the expiry of this approval.	Compliant	<p>A Conservation Management and Button Wrinklewort Recovery Plan (CMP) was provided to Post Approval Section, DoE on 27 November 2015.</p> <p>The CMP is provided in Report No. 12152 (10.5).</p>
2A*.	The approval holder must implement the Conservation Management Plan approved by the Minister until the expiry of this approval.	Compliant	<p>The Conservation Management Plan (CMP) has been implemented since 2018 and management activities will continue until the expiry of this approval, 31 December 2025.</p> <p>Within this reporting period, 9 October 2024 to 31 December 2025, DTP engaged the Merri Creek Management Committee to undertake activities consistent with the CMP.</p>



		<p>This work included litter control, fencing inspections, weed control and biomass removal.</p> <p>An ecological burn was not conducted during the reporting period as the autumn 2024 ecological burn covered a large extent of the Biosite. Areas of higher biomass were brush cut, with the resulting thatch removed by hand, during the reporting period.</p> <p>DTP engaged Biosis Pty Ltd to prepare a monitoring report in accordance with the CMP. The monitoring report was provided to DCCEEW and DEECA on 19 December 2025, and published on the DTP website https://www.vic.gov.au/epbc-commitments#main-road-st-albans-level-crossing-removal-project on 19 December 2025.</p> <p>Key findings from the monitoring report include:</p> <p>The survey recorded an estimated population of approximately 484 Spiny Rice-flower and 62 Button Wrinklewort individuals across three monitoring zones: HZF, HZE and HZD. Most plants were assessed as being in good condition, with no individuals rated as poor and no significant mortality observed. Stress indicators were evident, particularly in HZF, where 30% of plants showed yellowing and 30% exhibited leaf and stem die-back, resulting in 50% of plants being classified as fine. In comparison, HZE and HZD displayed lower stress levels, with only 20% yellowing, 5% die-back, and 90% of plants rated as good in each zone (Biosis 2025).</p> <p>Overall, the number of weed species detected has declined since 2018, with most zones recording fewer species in 2025 than at baseline. Similarly, the percentage cover of high-threat weeds has generally reduced across the monitoring area, dropping from very high levels in 2018 (often exceeding 40–70% in some zones) to much lower values in 2025, typically under 25% in most zones. While some localised increases were noted (e.g., Zone E-5 and parts of Zone D), the broader trend indicates improved weed</p>
--	--	---



			<p>control and reduced dominance of high-threat species compared to the initial condition (Biosis 2025).</p> <p>No instances of non-target mortality at or above the above threshold were detected across the Biosite during the current assessment (Biosis 2025).</p>
3.	To protect the listed threatened species and communities at Biosite 3546, prior to commencement of and during construction activities, the person taking the action must prepare and implement a Construction Environment Management Plan. The person taking the action must ensure that Construction Environment Management Plan includes, but is not limited to:	Compliant	<p>A Construction Environment Management Plan was prepared prior to the commencement of construction, and implemented during the construction period, between October 2015 and November 2016.</p> <p>Construction Environment Management Plans are published on the DTP website (https://www.vic.gov.au/epbc-commitments#main-road-st-albans-level-crossing-removal-project) in Sections 1-4.</p> <ol style="list-style-type: none"> 1. LAH-EN-PLN-0001 - Project Environmental Management Plan 2. LAH-EN-PLN-0002-00- St Albans Environmental Management Sub-Plan 3. LAH-EN-PLN-0006 SEP text MAIN RD LCRP- 150918 4. St Albans Main Road SEP Sheets 1 to 6
3a.	establishing and maintaining 'no-go zones' around listed threatened species and communities as defined by Appendix B, to prevent fill, equipment, materials, wastes or works facilities from entering or being stored in Biosite 3546.	Compliant	<p>No-go zones were established around listed threatened species and communities during the construction period between October 2015 and November 2016. The St Albans Main Road Site Environmental Plan (Sheets 1 to 6), Appendix C, details the locations of no-go zones. A clearly signed 1.8 m high chain wire fence remains in place to protect listed threatened species and communities.</p>
3b.	ensuring that the boundary of the 'no-go zones' is clearly marked with a 1.8 m high chain wire fence and clearly signed for the duration of construction activities to prevent any disturbance of Biosite 3546;	Compliant	<p>A clearly signed 1.8 m high chain wire fence was established to mark the boundaries of the 'no-go zones' during the construction period between October 2015 and</p>



			<p>November 2016. The chain wire fence remains in place to protect listed threatened species and communities.</p> <p>St Albans Main Road Site Environmental Plan (Sheets 1 to 6), Appendix C, details the locations of no-go zones.</p>
3c.	ensuring that all machinery wash down, lay down and personnel rest areas are clearly defined (fenced and signed) and located in disturbed areas;	Compliant	St Albans Main Road Site Environmental Plan (Sheets 1 to 6), Appendix C, details the locations of lay down and personal rest areas. Sub-plan 2: Flora and Fauna require that machinery brought to site must be inspected, and free from soil and seed.
3d.	ensuring that all on site staff and contractors involved in the construction of the proposed action attend an induction session presented by a suitably qualified ecologist prior to admittance to project area. The induction must include:	Compliant	St Albans Main Road Site Environmental Plan, Sub-plan 2: Flora and Fauna details the ecologist induction requirements.
3d,i.	a brief on the identification and conservation status of listed threatened species and communities and their habitat at the proposed action,	Compliant	St Albans Main Road Site Environmental Plan, Sub-plan 2: Flora and Fauna details the ecologist induction requirements; including a brief on the identification and conservation status of listed threatened species and communities and their habitat at the proposed action.
3d,ii.	the reason for mitigation measures and practices to avoid or minimise impacts to listed threatened species and communities and their habitat;	Compliant	St Albans Main Road Site Environmental Plan, Sub-plan 2: Flora and Fauna details the ecologist induction requirements; including the reason for mitigation measures and practices to avoid or minimise impacts to listed threatened species and communities and their habitat.
3d,iii.	a brief to inform staff and contractors on documentation and the process for notification to the person taking the action of any identification of listed threatened species and communities and their habitat at the proposed action;	Compliant	St Albans Main Road Site Environmental Plan, Sub-plan 2: Flora and Fauna details the ecologist induction requirements; including a brief to inform staff and contractors on documentation and the process for notification to the person taking the action of any identification of listed threatened species and communities and their habitat at the proposed action.



3d,iv.	a brief on stop work procedures if any listed threatened species and communities are identified during construction; and	Compliant	St Albans Main Road Site Environmental Plan, Sub-plan 2: Flora and Fauna details the ecologist induction requirements; including a brief on stop work procedures if any listed threatened species and communities are identified during construction.
3d,v.	the requirements of this decision notice.	Compliant	St Albans Main Road Site Environmental Plan, Sub-plan 2: Flora and Fauna details the ecologist induction requirements, including the requirements of the decision notice.
3e.	establish and implement machinery and plant hygiene protocols to minimise vegetation and soil disturbance and the spread of weeds, pests, and pathogens. The protocols must include, but not be limited to:	Compliant	St Albans Main Road Site Environmental Plan (Sheets 1 to 6), Appendix C, and Sub-plan 2: Flora and Fauna details the machinery and plant hygiene protocols.
3e,i.	defining routes for the entrance and exit of machinery to the project area and limiting these to previously disturbed areas;	Compliant	St Albans Main Road Site Environmental Plan (Sheets 1 to 6), Appendix C, and Sub-plan 2: Flora and Fauna detail the machinery and plant hygiene protocols; including routes for the entrance and exit of machinery to the project area and limiting these to previously disturbed areas.
3e,ii.	establishing wash down points for vehicles to prevent the transportation of seeds and soil;	Compliant	St Albans Main Road Site Environmental Plan, Sub-plan 2: Flora and Fauna requires that machinery brought to site must be inspected, and free from soil and seed.
3e,iii.	undertaking inspections of all equipment (machinery, tools, vehicles) brought on site to ensure that all equipment is free of materials (such as soils and seeds); and	Compliant	St Albans Main Road Site Environmental Plan, Sub-plan 2: Flora and Fauna requires that machinery brought to site must be inspected, and free from soil and seed.
3e,iv.	maintaining a record (logbook) of the activities in ii) and iii) and providing this to the Department on request.	Compliant	St Albans Main Road Site Environmental Plan, Sub-plan 2: Flora and Fauna requires that machinery brought to site must be inspected to ensure that it is clean and free of soil and seed and a logbook of inspections is to be maintained.
3.	This Construction Environment Management Plan must be prepared in consultation with relevant local and state authorities prior to the commencement of construction activities. The Construction	Compliant	The St Albans Main Road Site Environmental Plan was prepared in consultation with Brimbank City Council, provided to Post Approval Section, DoE on 9 October 2015 and published on the Level Crossing Removal Authority website from 25 November 2015.



	<p>Environment Management Plan must be finalised prior to the commencement of construction activities. The finalised Construction Environment Management Plan must be provided to the Department prior to the commencement of construction activities and must be published on the website of the person taking the action for the duration of construction activities. The finalised Construction Environmental Management Plan must be implemented for the duration of construction activities.</p>		<p>The St Albans Main Road Site Environmental Plan is currently published on the DTP website (https://www.vic.gov.au/epbc-commitments#main-road-st-albans-level-crossing-removal-project)</p>
<p>4*.</p>	<p>The approval holder must ensure that between 31 August 2024 and 1 November 2024, surveys are undertaken at Biosite 3546 to determine the presence, abundance and area of listed threatened species and communities at Biosite 3546.</p>	<p>Compliant</p>	<p>DTP engaged Nature Advisory to undertake surveys at Biosite 3546 to determine the presence, abundance and area of listed threatened species and communities. All surveys were undertaken in accordance with the EPBC Act policy statement 3.11 "Significant impact guidelines for the critically endangered Spiny Rice-flower" (DEWHA 2009). Nature Advisory completed these surveys in August and October 2024. Refer to reports 18208 (8.1) and 18208 (9.0) for further detail.</p> <p>Following the results of the surveys by Nature Advisory in 2024, which found a deficit of Spiny Rice-flower individuals and a deficit in the extent of the Natural Temperate Grassland area, DTP engaged Biosis to re-survey for these threatened species and communities.</p> <p>Biosis undertook a targeted survey for the Spiny Rice-flower in accordance with the Department's Survey guidelines (DEWHA 2009), and mapped the extend of the Natural Temperate Grassland using a handheld DGPS (with submeter accuracy between 1 and 10 centimetres. These surveys were undertaken in August 2025.</p> <p>Refer to the Biosite 3546 Conservation Management Plan (EPBC 2014/7203) Compliance Report (Biosis 2025) for further detail.</p>



4A*.	The approval holder must ensure that the surveys undertaken at Biosite 3546 pursuant to condition 4 of this approval, are conducted by a suitably qualified expert, in accordance with the department's survey guidelines.	Compliant	<p>The surveys pursuant to condition 4 were conducted by Nature Advisory, a suitably qualified, independent ecological consultancy. All surveys were completed by suitably qualified ecologists in accordance with the Department's survey guidelines (DEWHA 2009). Refer to reports 18208 (8.1) and 18208 (9.0) for further detail.</p> <p>The re-surveys undertaken in 2025 were conducted by Biosis, a suitably qualified, independent ecological consultancy. All surveys were completed by suitably qualified ecologists in accordance with the Department's survey guidelines (DEWHA 2009). Refer to the Biosite 3546 Conservation Management Plan (EPBC 2014/7203) Compliance Report (Biosis 2025) for further detail.</p>
4B.a*	<p>On completion of the surveys undertaken pursuant to condition 4 of this approval, the approval holder must prepare a Biosite 3546 Survey Report (BSR) that:</p> <p>a. contains, details and summarises the survey results, including:</p> <ul style="list-style-type: none"> i. the presence of Spiny Rice-flower, Button Wrinklewort and Natural Temperate Grassland of the Victorian Volcanic Plain at Biosite 3546; ii. the total number of Spiny Rice-flower and Button Wrinklewort individuals within Biosite 3546; and iii. the total area of Natural Temperate Grassland of the Victorian Volcanic Plain within Biosite 3546; 	Compliant	<p>Nature Advisory prepared two Biosite 3546 Survey Reports, Report 18208 (8.1) addresses the Spiny Rice-flower, while Report 18208 (9.0) addresses the Button Wrinklewort and NTGVVP.</p> <p>The reports found the following results against each condition:</p> <ul style="list-style-type: none"> i. Spiny Rice-flower, Button Wrinklewort and NTGVVP are all present within Biosite 3546; ii. The number of Spiny Rice-flower individuals recorded in the survey was 336 individuals, generally in good health. The number of Button Wrinklewort individuals recorded in the survey was 71 individuals, at various stages of health. iii. The total area of the NTGVVP was found to be 0.866 hectares, all in good health.
4B. b*	compares the information required by condition 4B.a with preconstruction details for listed threatened species and communities at Biosite 3546.	Compliant	The survey reports compared the presence of threatened species with the preconstruction details in section 3 of both reports:



			<ul style="list-style-type: none"> The initial pre-construction surveys for Spiny Rice-flower in January and February of 2014 found 536 individuals. The August 2024 surveys found 336 individuals, a deficit of 200 Spiny Rice-flower individuals. The initial pre-construction surveys for the Button Wrinklewort in February and October 2013 found 12 individuals. The October 2024 surveys found 71 individuals, a surplus of 59 Button Wrinklewort individuals. The initial pre-construction surveys for the NTGVVP in October 2013 found 0.978 ha. The October 2024 surveys found 0.866 ha, a deficit of 0.112 ha. The largest allowable impact to the NTGVVP within the Biosite was 1.5ha.
4C*.	The approval holder must submit the BSR electronically to the Department by 1 December 2024.	Compliant	DTP provided the survey reports electronically to the Department on 28 November 2024.
5*.	Revoked	Not applicable	Not applicable
6*.	Revoked	Not applicable	Not applicable
7*.	Revoked	Not applicable	Not applicable
8*.	Revoked	Not applicable	Not applicable
9.	Within five (5) days after the commencement of construction activities, the person taking the action must advise the Department in writing of the actual date of commencement.	Compliant	Construction commenced on Friday 9 October 2015. Letter sent to Post Approval Section, DoE on 16 October 2015, informing DoE of the commencement of construction.
10*.	The approval holder must maintain accurate and complete compliance records and document the procedure for recording and storing compliance records.	Compliant	Records are maintained in DTP's corporate filing system in folder VRF5123284 (Flora And Fauna).

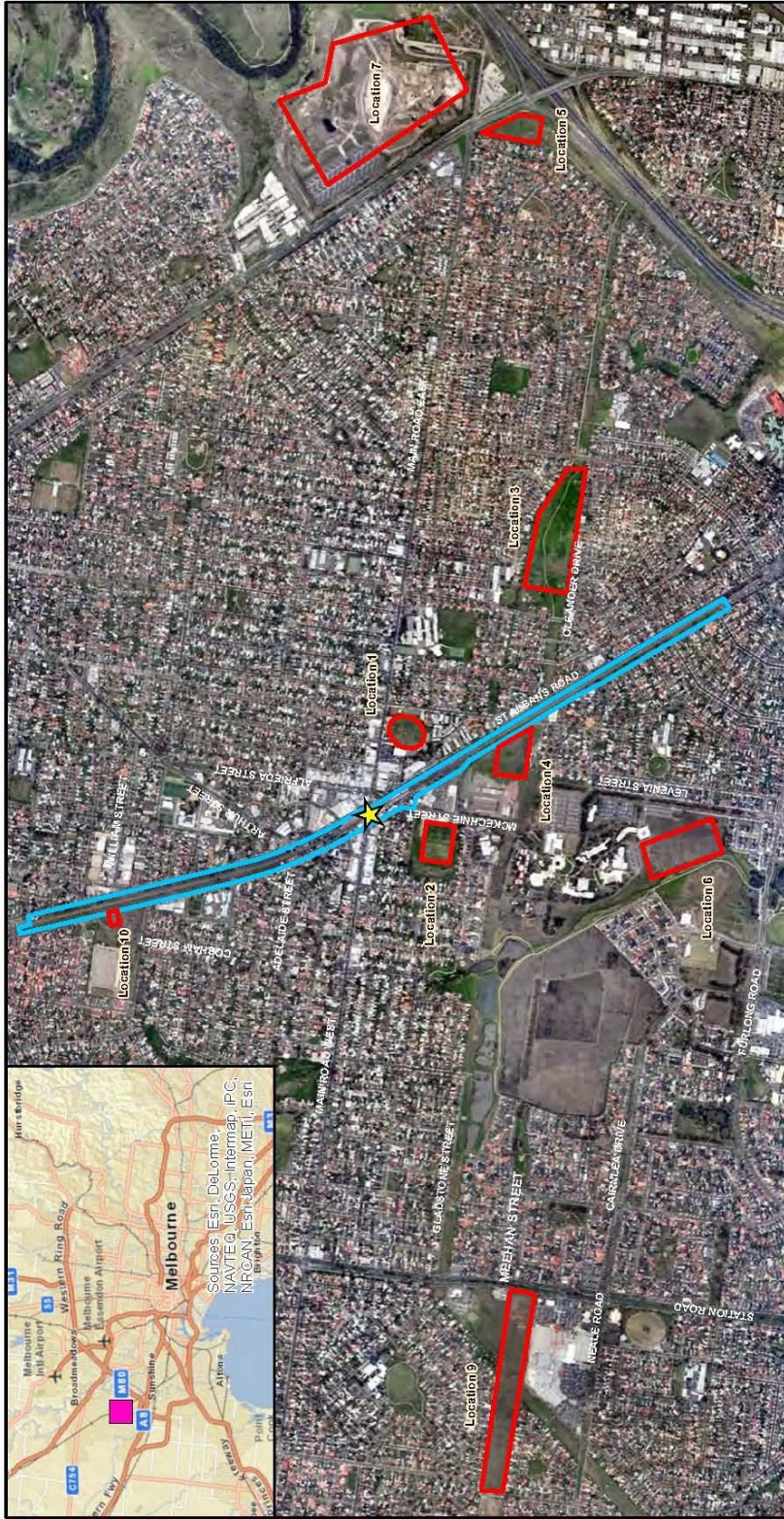


10A*.	<p>If the Department makes a request in writing, the approval holder must provide electronic copies of compliance records to the Department within the timeframe specified in the request.</p> <p>Note: Compliance records may be subject to audit by the department, or by an independent auditor in accordance with section 458 of the EPBC Act, and/or be used to verify compliance with the conditions. Summaries of the results of an audit may be published on the department’s website or through the general media.</p>	Not applicable	Not applicable
11*.	<p>Within three months of every 12 month anniversary of the commencement of the action, the approval holder must publish a report on their website addressing compliance with each of the conditions of this approval, including implementation of any management plans as specified in the conditions. Documentary evidence providing proof of the date of publication must be provided to the Department at the same time as the compliance report is published.</p>	Compliant	<p>This annual compliance report for the period between 9 October 2024 and 31 December 2025 was published on the DTP website on 19 December 2025.</p> <p>Evidence of the date of publishing was provided electronically to the Department at the same time on 19 December 2025.</p>
11A*.	<p>The approval holder must notify the Department electronically, within 2 business days of becoming aware of any potential or actual non-compliance with the conditions of this approval. The approval holder must specify in each notification:</p> <ul style="list-style-type: none"> a. the condition which has been or may not have been complied with; and b. a short description of the non-compliance. 	Not applicable	No new non-compliances have been recorded against this approval in the 2024 – 25 reporting period.
12.	<p>If, at any time after five (5) years from the date of this approval, the person taking the action has not commenced the action, then the person taking the action must not commence the action without the written agreement of the Minister,</p>	Compliant	Grade separation works to remove the level crossing at Main Road, St Albans commenced on 9 October 2015. This was within five years of the date of approval.



13.	Unless otherwise agreed to in writing by the Minister, the person taking the action must publish all management plans referred to in these conditions of approval on their website. Each management plan must be published on the website within one (1) month of being approved.	Compliant	All management plans are published on the DTP website (https://www.vic.gov.au/epbc-commitments#main-road-st-albans-level-crossing-removal-project)
-----	---	-----------	---

APPENDIX A – MAP OF PROJECT AREA



Legend

- Study area
- Temporary storage locations
- ★ Main Road Level Crossing
- St Albans Project area



Overview map	
Project: Main Road St. Albans Level Crossing	
Client: VicRoads	
Project No.: 12152	Date: 31/10/2014
Created By: A. Brennan / M. Ghaseini	
BL&A Brett Lane & Associates Pty. Ltd. Building, Landscaping & Environmental 5/115, 6/115 Camberwell Road Ph: (03) 9415 3111 / Fax: (03) 9415 3166 Email: enquiries@brettlane.com.au Website: www.brettlane.com.au PO Box 311, Camberwell, VIC 3163, Australia www.brettlane.com.au	



APPENDIX B – LOCATION OF CONSTRUCTION ACTIVITIES AND THREATENED SPECIES AND COMMUNITIES



Legend

- Study Area
- Retaining wall
- Construction activities
- Rail track
- No-go zone

Native vegetation

- Heavier-soils Plains Grassland (EVC 132_61)
- NTGVVP
- Biosite and presumed Striped Legless Lizard habitat

Threatened Species (Each symbol may represent more than one plant)

- ★ Spiny Rice-flower

0 25 50 100 Metres

Construction activities - North

Project: Main Road St. Albans Level Crossing Removal

Client: VicRoads

Project No.: 12152

Date: 31/10/2014

Created By: A. Brennen / M. King



Brett Lane & Associates Pty. Ltd.
Ecological Research & Management
Suite 5, 61-63 Cambourne Road
Hawthorn East, VIC 3123
PO Box 337, Camberwell, VIC 3124, Australia



Ph: (03) 9519 2111 / Fax: (03) 9519 3039
enquiries@ecologicresearch.com.au
www.ecologicresearch.com.au

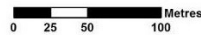


Legend

- Study Area
- Construction activities
- No-go zone
- Retaining wall
- Rail track
- Native vegetation
- Heavier-soils Plains Grassland (EVC 132_61)
- NTGVVP
- Biosite and presumed Striped Legless Lizard habitat

Threatened Species (Each symbol may represent more than one plant)

- ★ Spiny Rice-flower
- ▲ Button Winklewort
- Large-headed Fireweed



Construction activities - Centre 1

Project: Main Road St. Albans Level Crossing Removal

Client: VicRoads

Project No.: 12152 Date: 31/10/2014 Created By: A. Brennen / M. King

<p>B&A Experience Knowledge Solutions</p>	<p>Brett Lane & Associates Pty. Ltd. Ecological Research & Management Suite 5, 61 - 63 Camberrill Road Hawthorn East, VIC 3123 PO Box 337, Camberwell, VIC 3124, Australia</p>	<p>Ph (03) 9815 2111 / Fax (03) 9815 2685 enquiries@ecologicalresearch.com.au www.ecologicalresearch.com.au</p>	<p>N</p>
--	--	---	----------

APPENDIX C – LOCATION OF NO GO ZONES

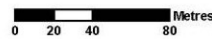


Legend

- Study Area
- NTGVZ to be removed
- Native vegetation
- Heavier-soils Plains Grassland (EVC 132_61)
- NTGVZ
- Biosite and presumed Striped Legless Lizard habitat
- No-go zone
- × Spiny Rice-flower to be removed

Threatened Species (Each symbol may represent more than one plant)

- ▲ Button Wrinklewort
- Large-headed Fireweed
- ★ Spiny Rice-flower

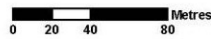


MoNES and Impacts - North		
Project: Main Road St. Albans Level Crossing Removal		
Client: VicRoads		
Project No.: 12152	Date: 31/10/2014	Created By: A. Brennan / M. King
Brett Lane & Associates Pty. Ltd. Ecological Research & Management Suite 3.41 - 43 Camberwell Road Hawthorn East, VIC 3123 PO Box 337, Camberwell, VIC 3124, Australia Ph: (03) 9815 2111 / Fax: (03) 9815 2685 enquiries@ecologicalresearch.com.au www.ecologicalresearch.com.au		



Legend

- Study Area
- NTGVVP to be removed
- Native vegetation
- Heavier-soils Plains Grassland (EVC 132_61)
- NTGVVP
- Biosite and presumed Striped Legless Lizard habitat
- No-go zone
- Threatened Species (Each symbol may represent more than one plant)
- ▲ Button Wrinklewort
- Large-headed Fireweed
- ★ Spiny Rice-flower
- ✕ Spiny Rice-flower to be removed
- No-go zone



MoNES and Impacts - North		
Project: Main Road St. Albans Level Crossing Removal		
Client: VicRoads		
Project No.: 12152	Date: 31/10/2014	Created By: A. Brennan / M. King
Brett Lane & Associates Pty. Ltd. Ecological Research & Management		
<ul style="list-style-type: none"> ● Experience ● Knowledge ● Solutions 	Suite 3, 41 - 43 Camberwell Road Hawthorn East, VIC 3123 PO Box 337, Camberwell, VIC 3124, Australia	Ph (03) 9415 2111 / Fax (03) 9415 2685 enquiries@ecologicalresearch.com.au www.ecologicalresearch.com.au



Legend

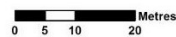
- Study Area
- Retaining wall
- Construction activities
- Rail track
- No-go zone

Native vegetation

- Heavier-soils Plains Grassland (EVC 132_61)

Threatened Species (Each symbol may represent more than one plant)

- ★ Spiny Rice-flower
- ▲ Button Wrinklewort
- Large-headed Fireweed



No-go zone - Habitat zone D & E

Project: Main Road St. Albans Level Crossing Removal

Client: VicRoads

Project No.: 12152 Date: 31/10/2014 Created By: A. Bremmen / M. Ghasemi

	Brett Lane & Associates Pty Ltd. Ecological Research & Management			
	Experience Suite 5, 61-63 Camberwell Road	Hawthorn East, VIC 3123		Ph (03) 9543 2111 / Fax (03) 9543 2685 enquiries@ecologicalresearch.com.au
	Knowledge PO Box 337, Camberwell, VIC 3124, Australia			www.ecologicalresearch.com.au



APPENDIX D – LOCATION OF TEMPORARY STORAGE LOCATIONS



Legend

- Temporary storage locations
- Native vegetation extent**
- Exotic tree cover
- Native vegetation cover
- Threatened flora (VBA)**

0 50 100 200 Metres

Figure 1: Temporary storage locations 1, 2 and 4

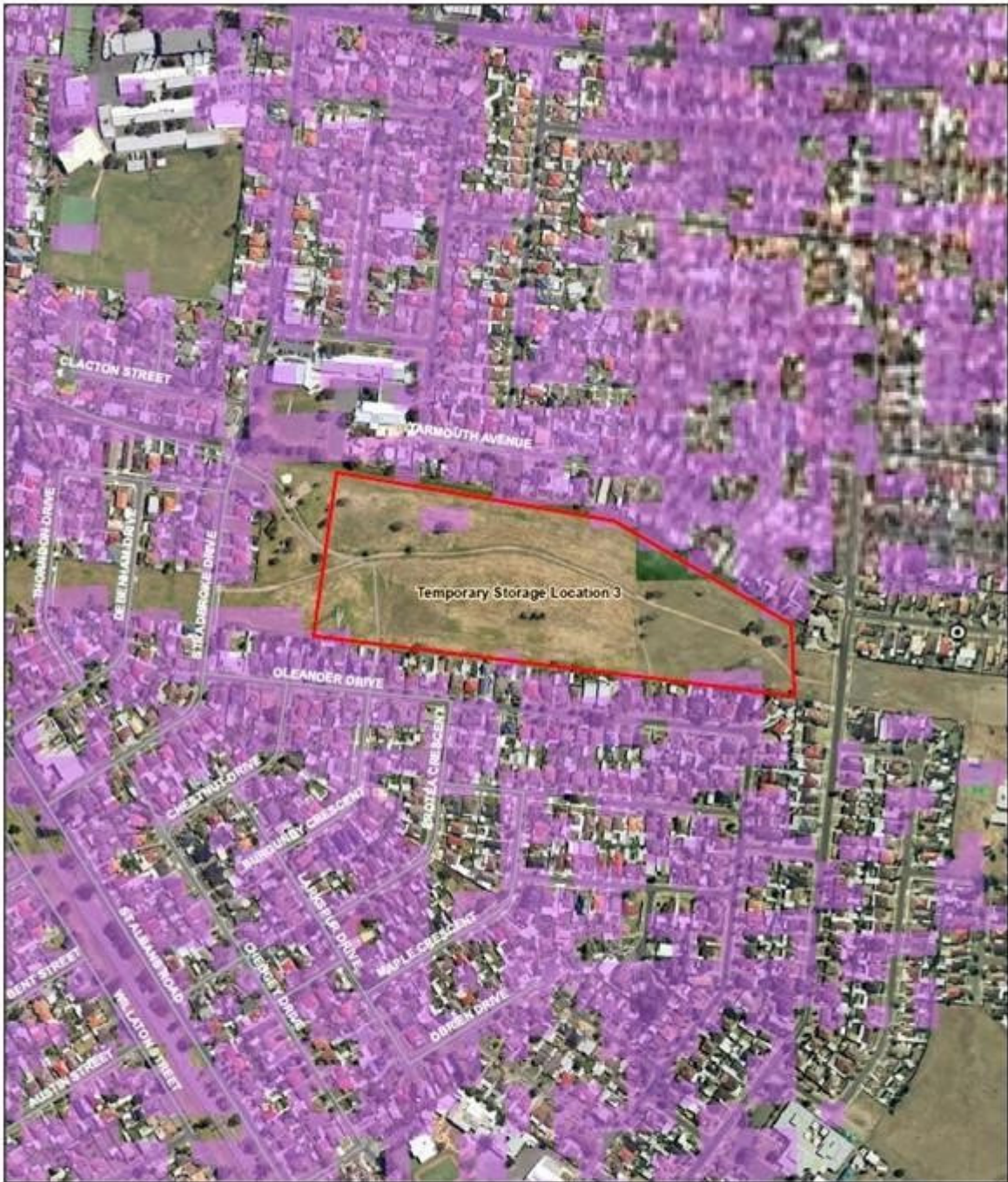
Project: Main Road St. Albans Level Crossing

Client: VicRoads

Project No.: 12162

Date: 6/5/2014

Created By: A. Brooker / M. Giamari



Legend

- Temporary storage location
- Native vegetation extent**
- Exotic tree cover

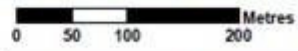


Figure 2: Temporary storage location 3		
Project: Main Road St. Albans Level Crossing		
Client: VicRoads		
Project No.: 12162	Date: 6/06/2014	Created By: A. Brennan / M. Ghassami



Legend

- Temporary storage location
- Biosites
- Native vegetation extent**
- Exotic tree cover
- Native vegetation cover

Threatened flora (VBA)

- ◆ Slender Bindweed

Threatened fauna (VBA)

- ▲ Pacific Gull

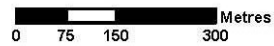


Figure 3: Temporary storage locations 5 and 7

Project: Main Road St. Albans Level Crossing

Client: VicRoads

Project No.: 12152

Date: 31/10/2014

Created By: A. Brennan / M. Ghazemi

	Brett Lane & Associates Pty. Ltd. Level 10/11, 100 Sturt Street, Melbourne, Victoria	
	Experience	Suite 3, 61 - 63 Camberwell Road
	Knowledge	Hawthorn East, VIC 3123
	Solutions	PO Box 337, Camberwell, VIC 3124, Australia
	Ph: (03) 9415 2111 / Fax: (03) 9415 2655	enquiries@ecologicalresearch.com.au www.ecologicalresearch.com.au





Legend

- Temporary storage location
- Biosites
- Native vegetation extent**
- Exotic tree cover
- Native vegetation cover

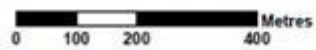


Figure 6: Temporary storage location 9		
Project: Main Road St. Albans Level Crossing		
Client: VicRoads		
Project No.: 12162	Date: 8/08/2014	Created By: A. Brossan / M. Ghazemi



Legend

- Temporary storage location
- Biosites
- Native vegetation extent**
- Exotic tree cover



Figure 7: Temporary storage location 10		
Project: Main Road St Albans Level Crossing		
Client: VicRoads		
Project No.: 12162	Date: 8/08/2014	Created By: A. Brinson / M. Ghassani
BSA <small>Bechtel, Lovell & Associates Pty Ltd</small> <small>Technical Services & Management</small>		
<ul style="list-style-type: none"> ● Experience ● Knowledge ● Intuition 	Suite 5.0 - 6/Coleridge Road Moorabool Park, VIC 3307 20 Esplanade, Coleridge, VIC 3304, Australia	Ph: 03 9453 5061 / Fax: 03 9453 3308 enquiries@bsa.com.au www.bsa.com.au